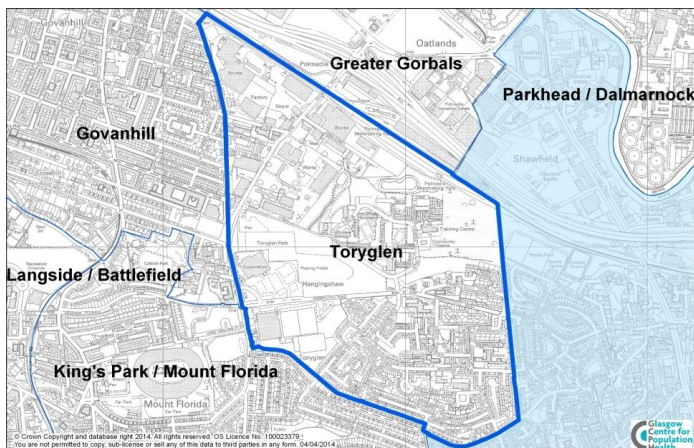


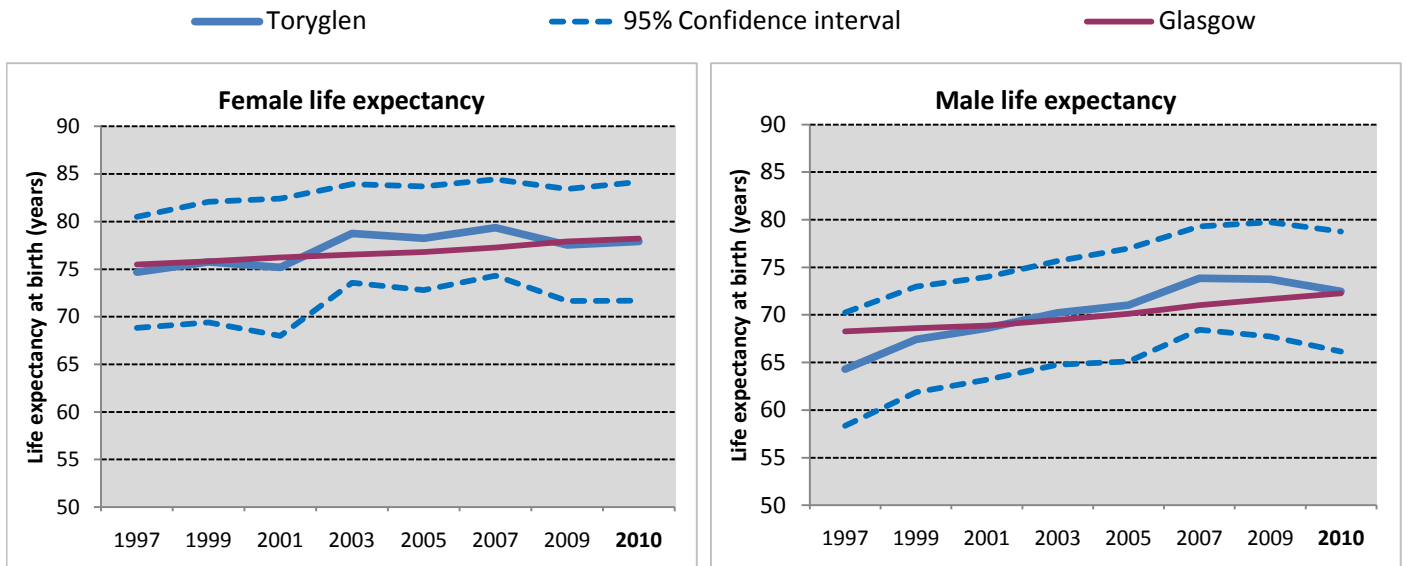
Toryglen is a neighbourhood in the south of Glasgow with a population of 4,475.



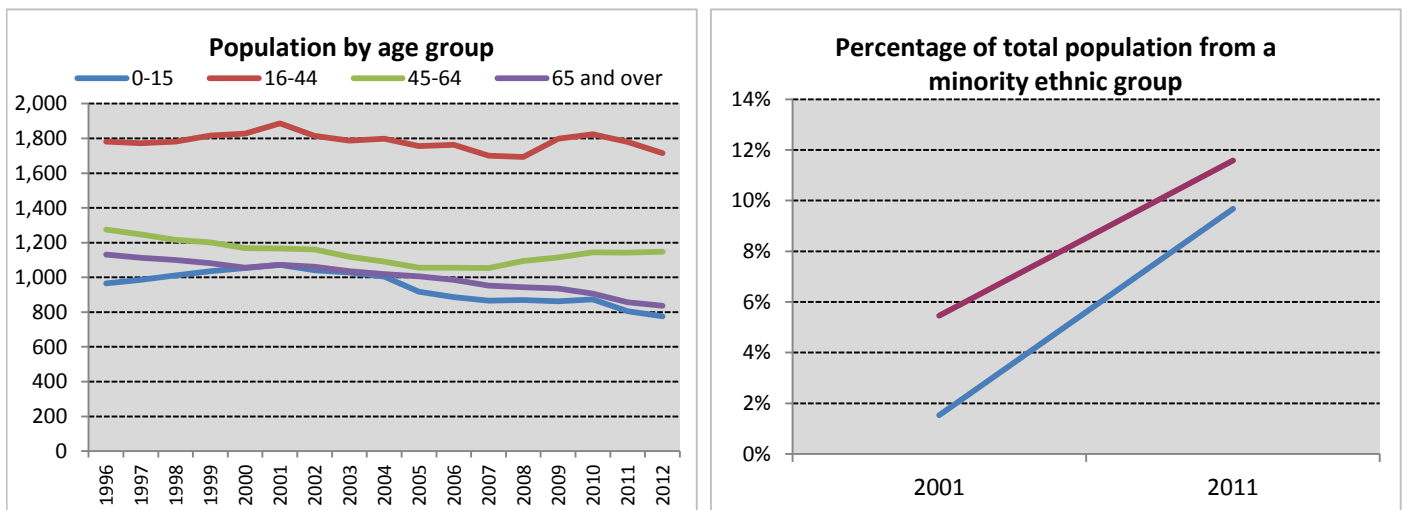
Neighbourhood comparisons with Glasgow

Estimates of male and female life expectancy in Toryglen are similar to the Glasgow average. Women live on average for five and a half years longer than men. There is a higher percentage of older people - defined as aged 65 years and over - in the population (19%) than in Glasgow as a whole. Single parent households make up 51% of households with dependent children. Claimant rates for unemployment and disability benefits are higher than average. Levels of deprivation and people limited by disability are much higher than the Glasgow average.

Group	ID	Indicator	Count	%	Difference from Glasgow		Time Period
Population	P1	People aged 0 - 15	775	17.3%		+7%	2012
	P2	People aged 16 - 64	2,863	64.0%		-8%	
	P3	People aged 65 - 74	425	9.5%		+31%	
	P4	People aged 75 and over	412	9.2%		+37%	
Cultural	C1	People from an ethnic minority	454	9.7%		-16%	2011
	C2	People who are married, in a civil partnership, or co-habiting	1,370	35.6%		-15%	
	C3	Single parent households	300	51.0%		+26%	
	C4	Householders living alone	1,088	23.2%		+9%	
	C5	People with religious affiliation	3,383	72.1%		+16%	
Environment/ Transport	E1	People who travel to place of work or study by walking, bike or public transport	1,363	54.2%		+8%	2011
	E2	People living within 500m of vacant or derelict land	4,638	93.6%		+55%	
	E3	Households with one or more cars	836	35.7%		-28%	
	E4	Overcrowded households	371	15.8%		-9%	
Socio-economic	S1	Owner occupied households	828	35.3%		-23%	2011
	S2	People with grade D or E social classification	788	47.5%		+40%	
	S3	People in employment	1,745	50.9%		-10%	
	S4	People claiming Employment and Support Allowance	215	4.8%		+39%	2012
	S5	People claiming out of work benefits	780	28.3%		+32%	
Education	ED1	Adults with qualifications at Higher level and above	1,125	29.2%		-40%	2011
	ED2	Young people not in education, employment or training	36	12.9%		+9%	
Poverty	PO1	People in income deprivation	1,325	29.6%		+39%	2012
	PO2	People of working age in employment deprivation	770	27.7%		+45%	2011
	PO3	Children in poverty	370	37.6%		+17%	
Health	H1	People in "good" or "very good" health	3,291	70.2%		-9%	2011
	H2	People limited "a lot" or "a little" by disability	1,365	29.1%		+28%	
	H3	Male life expectancy	72.5 years			+0%	2008 - 2012
	H4	Female life expectancy	77.9 years			-0%	



Life expectancy for both males and females has risen in recent years in Toryglen and is close to the Glasgow average. In the most recent period shown (2008-12), male and female life expectancy was notably lower than the Scottish average.



The population in Toryglen decreased by 13% between 1996 and 2012, due to reductions across all of the age bands shown, but in particular among children and older adults. The percentage of the total neighbourhood population from a minority ethnic group increased from 2% in 2001 to 10% in 2011, but remained slightly lower than the Glasgow average.

Notes

1. Data sources: Scottish Index of Multiple Deprivation (SIMD) 2012, Census 2011, Census 2001, HMRC, NOMIS, National Records of Scotland (NRS) and Scottish Government.
2. Populations presented in the population trend chart and used to calculate life expectancy estimates are taken from NRS small area population estimates and are based on: the 2001 census for the years 1996 - 2001; both the 2001 and 2011 census for the years 2002 - 2010; and the 2011 census for the years 2011-2012.
3. The Income deprivation and Employment deprivation indicators are derived from SIMD 2012, more information on this deprivation index can be found at: <http://simd.scotland.gov.uk/publication-2012>
4. Life expectancies are calculated based on population estimates and death registrations. 95% confidence intervals have been added on the graphs to give an indication of their accuracy. The x-axes of the life expectancy graphs give the mid-year for each life expectancy estimate e.g. 2010 represents the life expectancy estimate for the period 2008 - 2012.
5. A notes and definitions document providing further information on the variables presented in the profile can be found in the Profiles section of the Understanding Glasgow website.