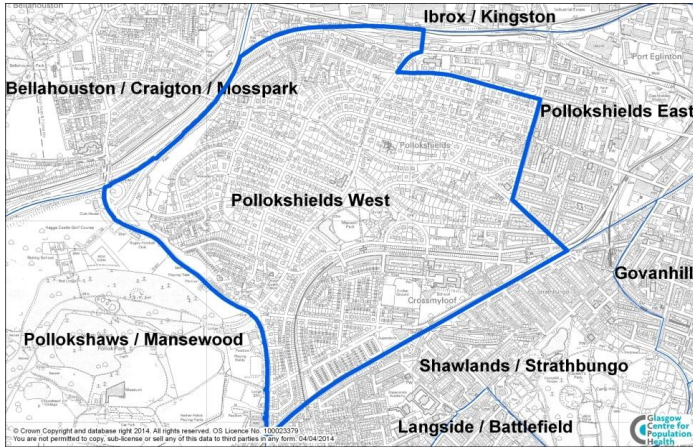


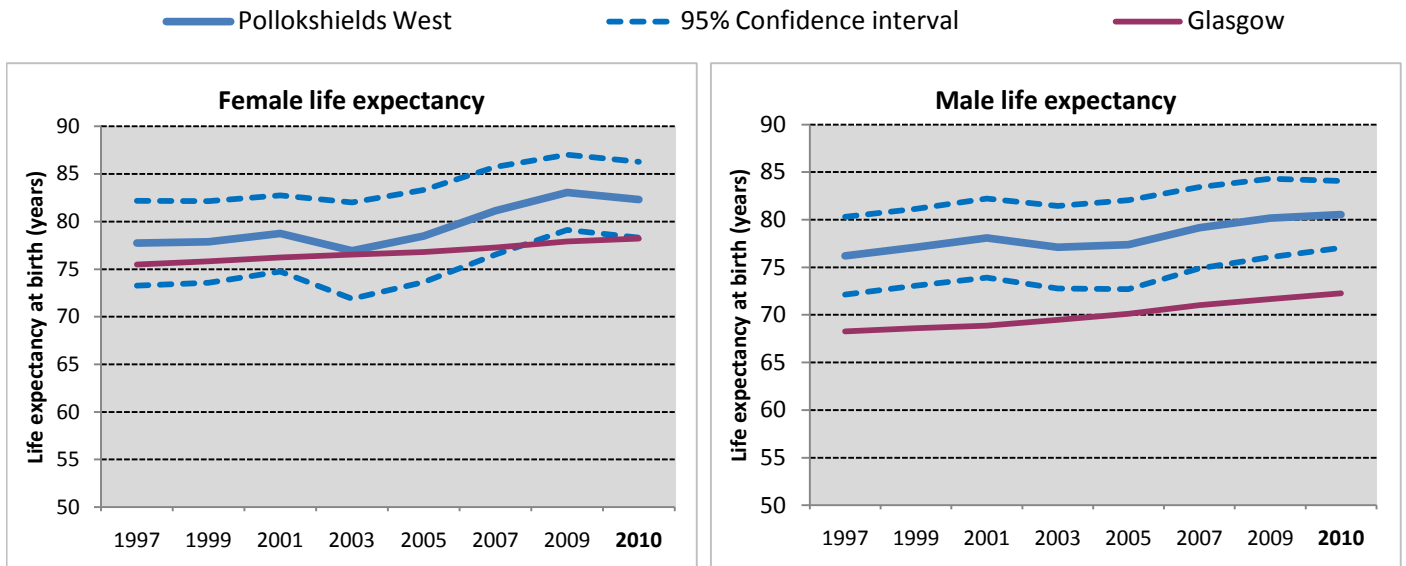
Pollokshields West is a neighbourhood in the south of Glasgow with a population of 7,187.



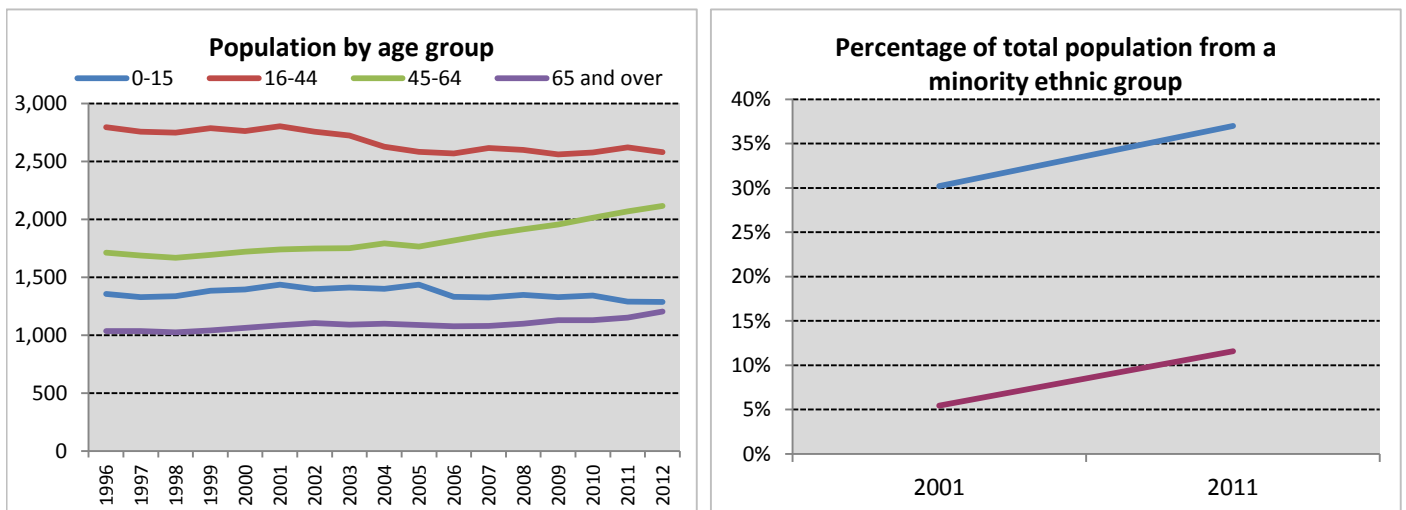
**Neighbourhood comparisons with Glasgow**

Estimates of male and female life expectancy in Pollokshields West are higher than the Glasgow average. Women live on average for two years longer than men. There are higher proportions of children and older people in the population than the Glasgow average. The proportion of people from an ethnic minority, 37%, is also above average. Levels of car ownership and owner-occupation are above the Glasgow average, while levels of deprivation and child poverty are much lower than the Glasgow average.

Group	ID	Indicator	Count	%	Difference from Glasgow		Time Period
Population	P1	People aged 0 - 15	1,287	17.9%		+11%	2012
	P2	People aged 16 - 64	4,696	65.3%		-7%	
	P3	People aged 65 - 74	606	8.4%		+16%	
	P4	People aged 75 and over	598	8.3%		+24%	
Cultural	C1	People from an ethnic minority	2,632	37.0%		+219%	2011
	C2	People who are married, in a civil partnership, or co-habiting	3,417	59.9%		+43%	
	C3	Single parent households	80	10.2%		-75%	
	C4	Householders living alone	826	11.8%		-44%	
	C5	People with religious affiliation	5,003	70.3%		+14%	
Environment/ Transport	E1	People who travel to place of work or study by walking, bike or public transport	1,528	33.2%		-34%	2011
	E2	People living within 500m of vacant or derelict land	1,778	25.2%		-58%	
	E3	Households with one or more cars	2,301	86.1%		+75%	
	E4	Overcrowded households	186	7.0%		-60%	
Socio-economic	S1	Owner occupied households	2,238	83.8%		+84%	2011
	S2	People with grade D or E social classification	246	12.4%		-64%	
	S3	People in employment	3,282	62.4%		+10%	
	S4	People claiming Employment and Support Allowance	85	1.2%		-66%	2012
	S5	People claiming out of work benefits	285	6.4%		-70%	
Education	ED1	Adults with qualifications at Higher level and above	4,006	68.7%		+42%	2011
	ED2	Young people not in education, employment or training	11	2.9%		-75%	
Poverty	PO1	People in income deprivation	585	8.1%		-62%	2012
	PO2	People of working age in employment deprivation	260	5.8%		-70%	2011
	PO3	Children in poverty	165	10.4%		-68%	
Health	H1	People in "good" or "very good" health	6,076	85.4%		+10%	2011
	H2	People limited "a lot" or "a little" by disability	1,157	16.3%		-28%	
	H3	Male life expectancy	80.6 years			+11%	2008 - 2012
	H4	Female life expectancy	82.3 years			+5%	



Life expectancy for both males and females has risen in recent years in Pollokshields West and has remained above the Glasgow average. In the most recent period shown (2008-12), male and female life expectancy was also above the Scottish average.



The population in Pollokshields West increased by 4% between 1996 and 2012, largely due to increases in the numbers of 45-64 year olds and older adults (aged 65 years and over). The percentage of the total neighbourhood population from a minority ethnic group increased from 30% in 2001 to 37% in 2011, and remains much higher than the Glasgow average.

Notes

1. Data sources: Scottish Index of Multiple Deprivation (SIMD) 2012, Census 2011, Census 2001, HMRC, NOMIS, National Records of Scotland (NRS) and Scottish Government.
2. Populations presented in the population trend chart and used to calculate life expectancy estimates are taken from NRS small area population estimates and are based on: the 2001 census for the years 1996 - 2001; both the 2001 and 2011 census for the years 2002 - 2010; and the 2011 census for the years 2011-2012.
3. The Income deprivation and Employment deprivation indicators are derived from SIMD 2012, more information on this deprivation index can be found at: <http://simd.scotland.gov.uk/publication-2012>
4. Life expectancies are calculated based on population estimates and death registrations. 95% confidence intervals have been added on the graphs to give an indication of their accuracy. The x-axes of the life expectancy graphs give the mid-year for each life expectancy estimate e.g. 2010 represents the life expectancy estimate for the period 2008 - 2012.
5. A notes and definitions document providing further information on the variables presented in the profile can be found in the Profiles section of the Understanding Glasgow website.