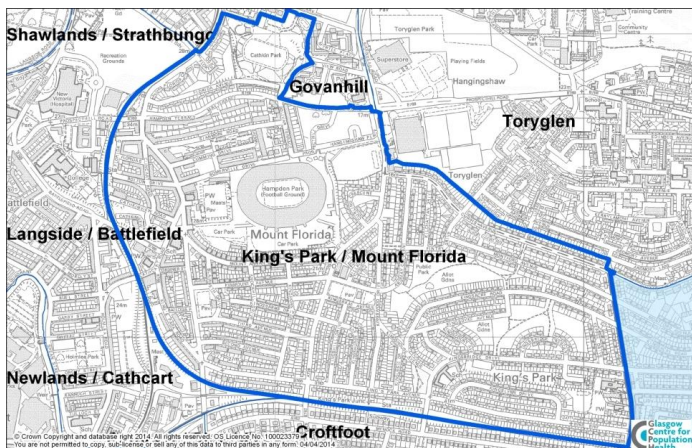


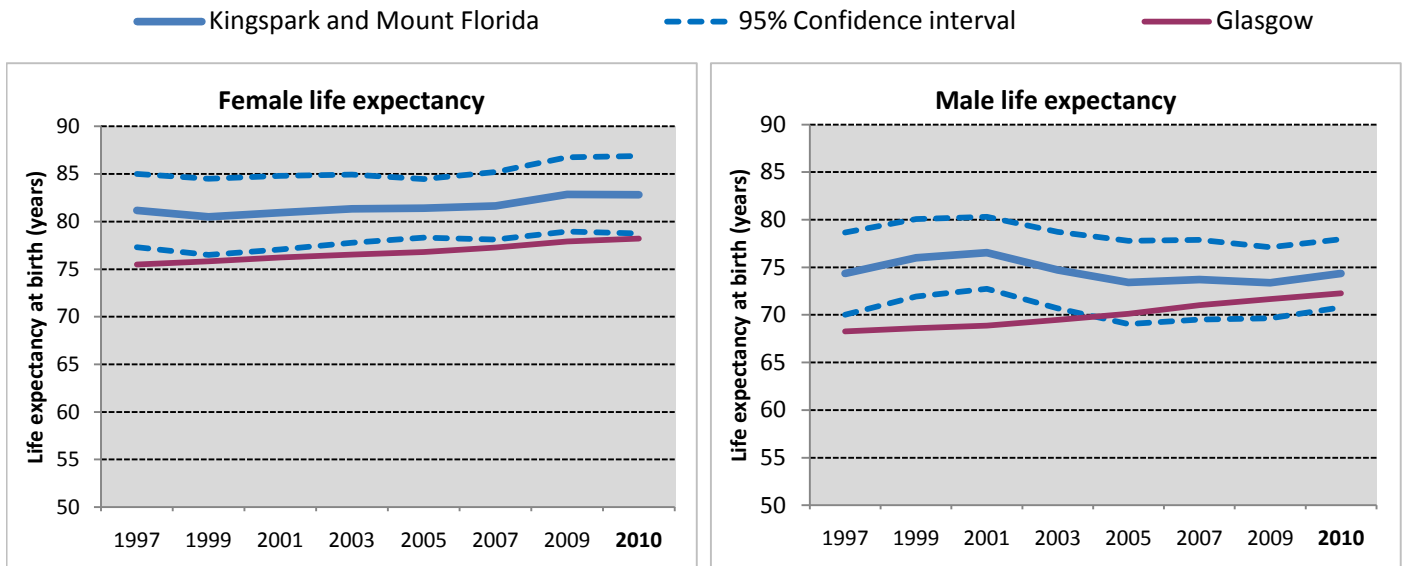
Kingspark and Mount Florida is a neighbourhood in the south of Glasgow with a population of 9,430.



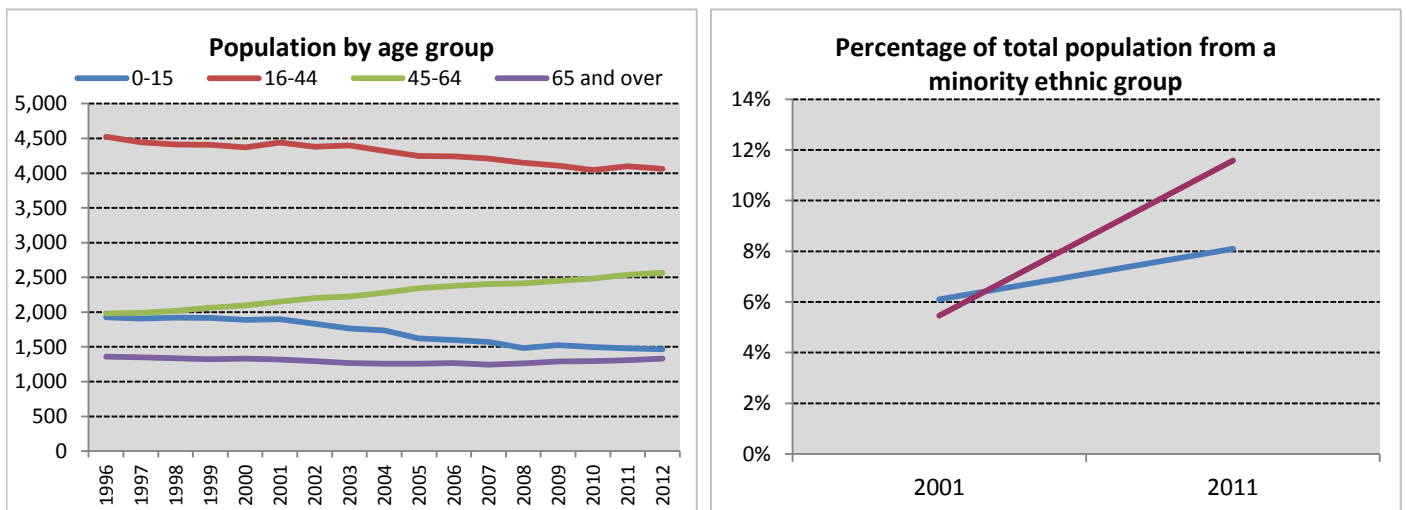
Neighbourhood comparisons with Glasgow

Women in Kingspark and Mount Florida live, on average, eight years longer than men. The estimates of both male and female life expectancy in Kingspark and Mount Florida are above the Glasgow average. The proportion of single parent households out of all households with children is low (29%) and the rate of people claiming out of work benefits (12%) is also low compared to the Glasgow average. A high proportion (71%) of the households in the area are owner occupied.

Group	ID	Indicator	Count	%	Difference from Glasgow	Time Period
Population	P1	People aged 0 - 15	1,467	15.6%	-4%	2012
	P2	People aged 16 - 64	6,629	70.3%	+1%	
	P3	People aged 65 - 74	727	7.7%	+6%	
	P4	People aged 75 and over	607	6.4%	-4%	
Cultural	C1	People from an ethnic minority	769	8.1%	-30%	2011
	C2	People who are married, in a civil partnership, or co-habiting	4,247	53.2%	+27%	
	C3	Single parent households	294	28.5%	-29%	
	C4	Householders living alone	1,750	18.5%	-13%	
	C5	People with religious affiliation	6,127	64.5%	+4%	
Environment/ Transport	E1	People who travel to place of work or study by walking, bike or public transport	3,030	47.4%	-6%	2011
	E2	People living within 500m of vacant or derelict land	4,136	45.7%	-24%	
	E3	Households with one or more cars	2,817	63.1%	+28%	
	E4	Overcrowded households	517	11.6%	-33%	
Socio-economic	S1	Owner occupied households	3,183	71.3%	+56%	2011
	S2	People with grade D or E social classification	745	21.2%	-38%	
	S3	People in employment	4,993	67.4%	+19%	
	S4	People claiming Employment and Support Allowance	205	2.2%	-37%	2012
	S5	People claiming out of work benefits	750	11.8%	-45%	
Education	ED1	Adults with qualifications at Higher level and above	4,693	58.6%	+21%	2011
	ED2	Young people not in education, employment or training	36	7.8%	-34%	
Poverty	PO1	People in income deprivation	1,115	11.8%	-45%	2012
	PO2	People of working age in employment deprivation	710	11.1%	-42%	2011
	PO3	Children in poverty	280	16.2%	-50%	
Health	H1	People in "good" or "very good" health	7,937	83.6%	+8%	2011
	H2	People limited "a lot" or "a little" by disability	1,610	16.9%	-25%	
	H3	Male life expectancy	74.4 years		+3%	2008 - 2012
	H4	Female life expectancy	82.8 years		+6%	



Female life expectancy has risen slightly in recent years in Kingspark and Mount Florida, while male life expectancy has fluctuated. Both have remained above the Glasgow average. In the most recent period shown (2008-12), life expectancy was below the Scottish average for males, but above for females.



The overall population of Kingspark and Mount Florida decreased by 4% between 1996 and 2012. The decrease was most evident in the 0-15 and 16-44 age groups. The percentage of the total neighbourhood population from a minority ethnic group increased from 6% in 2001 to 8% in 2011, but this figure remained below the Glasgow average.

Notes

1. Data sources: Scottish Index of Multiple Deprivation (SIMD) 2012, Census 2011, Census 2001, HMRC, NOMIS, National Records of Scotland (NRS) and Scottish Government.
2. Populations presented in the population trend chart and used to calculate life expectancy estimates are taken from NRS small area population estimates and are based on: the 2001 census for the years 1996 - 2001; both the 2001 and 2011 census for the years 2002 - 2010; and the 2011 census for the years 2011-2012.
3. The Income deprivation and Employment deprivation indicators are derived from SIMD 2012, more information on this deprivation index can be found at: <http://simd.scotland.gov.uk/publication-2012>
4. Life expectancies are calculated based on population estimates and death registrations. 95% confidence intervals have been added on the graphs to give an indication of their accuracy. The x-axes of the life expectancy graphs give the mid-year for each life expectancy estimate e.g. 2010 represents the life expectancy estimate for the period 2008 - 2012.
5. A notes and definitions document providing further information on the variables presented in the profile can be found in the Profiles section of the Understanding Glasgow website.