

# Children's Report Card –

## Population trends, socioeconomic context and health inequalities

Graphs related to sub-sections covering\*:

Births

Migration

Population estimates

Population projections

Ethnic diversity

Asylum seekers

Refugees

Household composition

Life expectancy

Healthy life expectancy

Deprivation



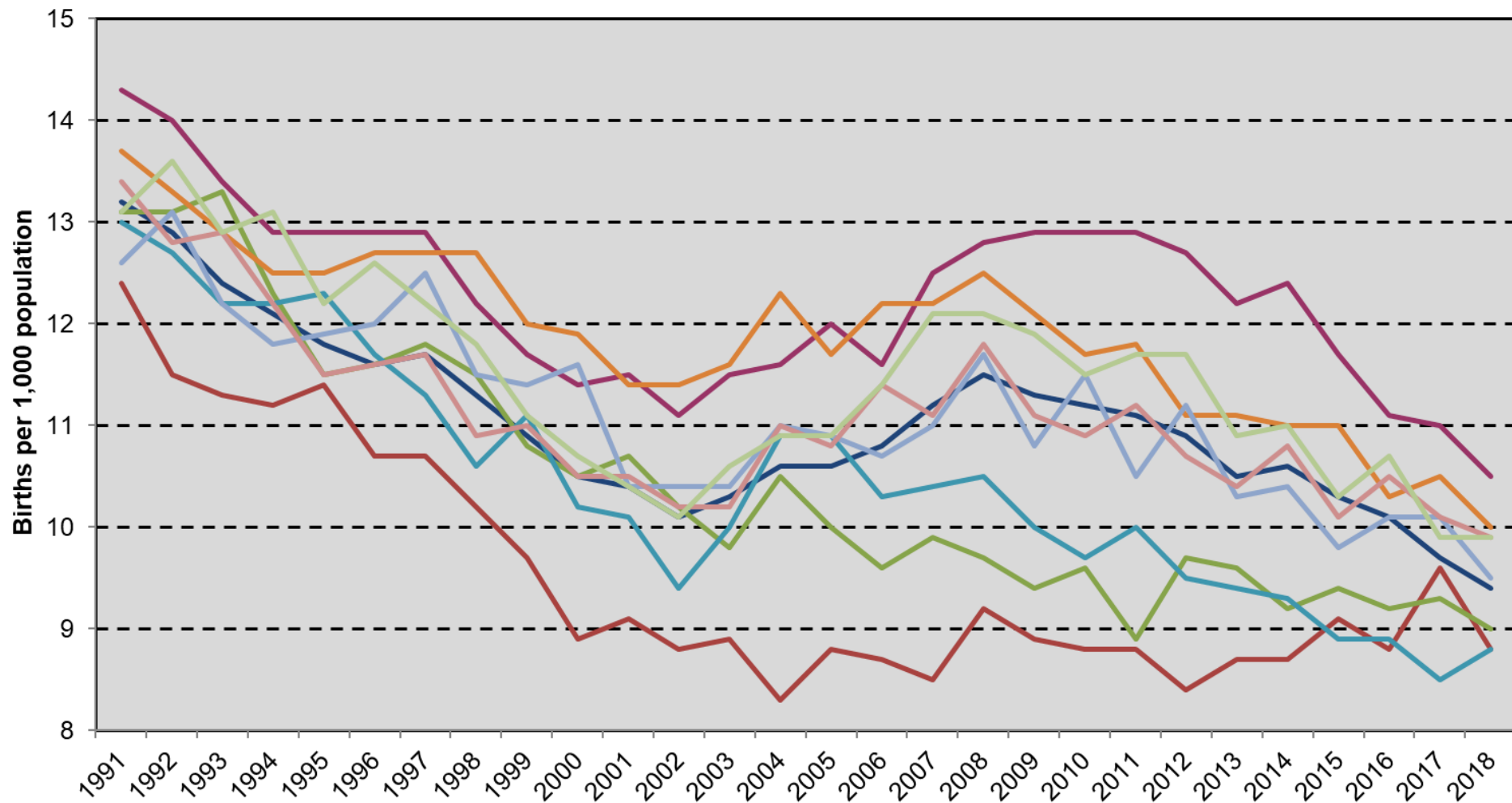
*\* Only a minority of these graphs were published in the report card but they are relevant to the report card commentary*

# Births

## Births per 1,000 population, 1991 - 2018

Source: National Records of Scotland

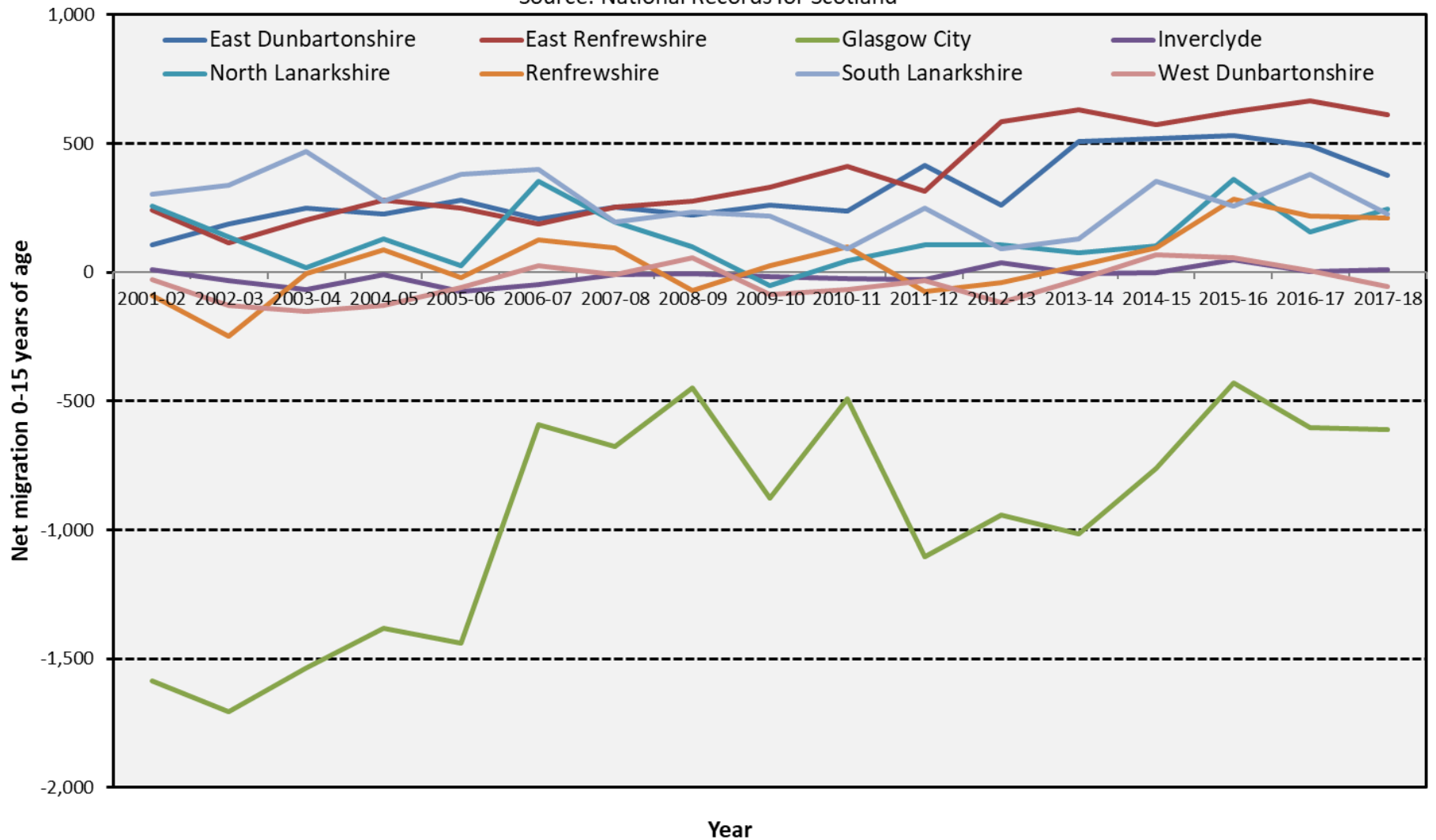
- Scotland
- Glasgow City
- Renfrewshire
- East Dunbartonshire
- Inverclyde
- South Lanarkshire
- East Renfrewshire
- North Lanarkshire
- West Dunbartonshire



# Migration

## Net migration, 0-14 year olds, Glasgow and Clyde Valley Local Authorities, 2001-02 - 2017-18

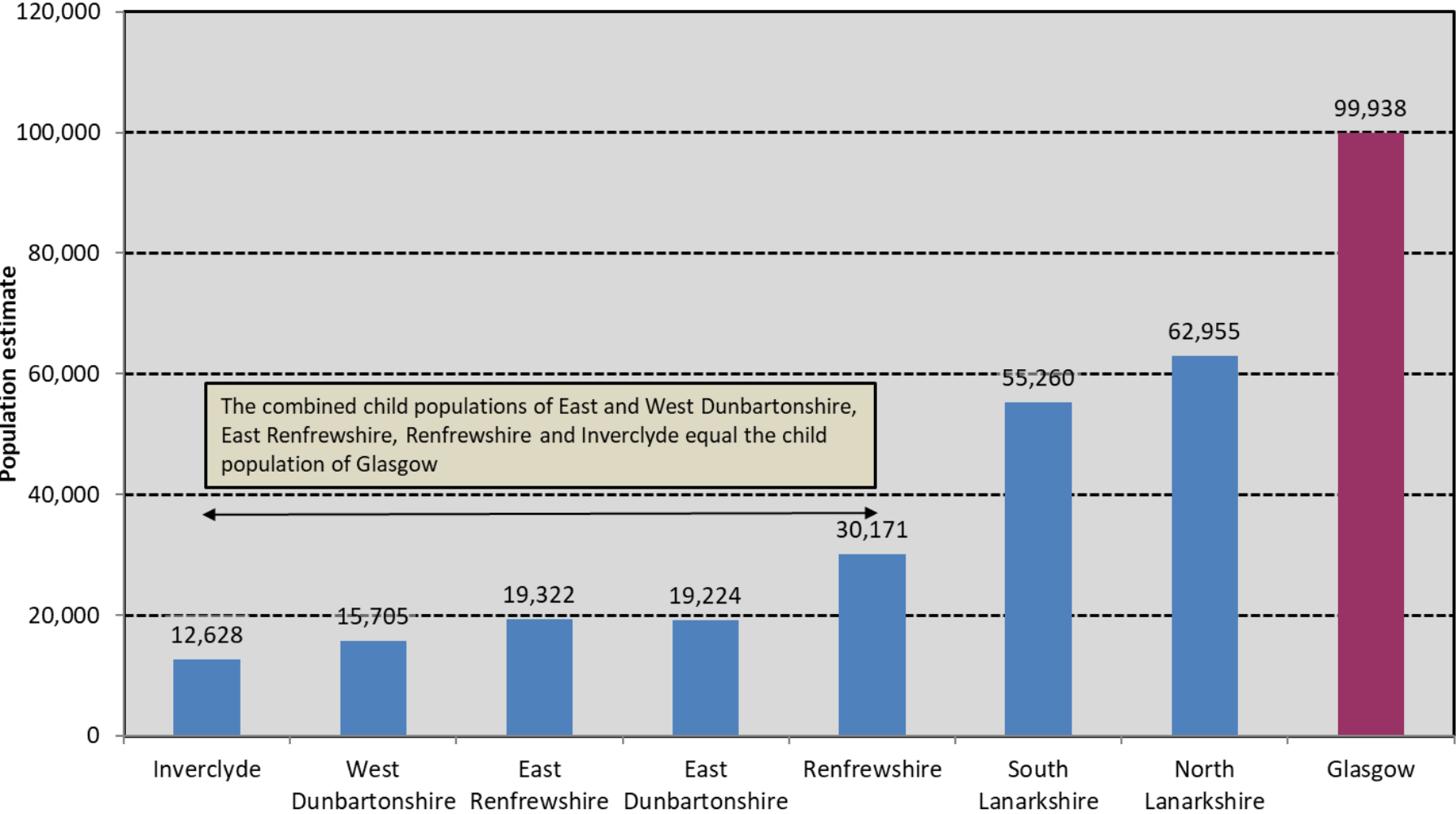
Source: National Records for Scotland



# Population estimates

Child population (0 - 15 years) estimates  
of Glasgow City Region local authorities, 2018

Source: National Records of Scotland



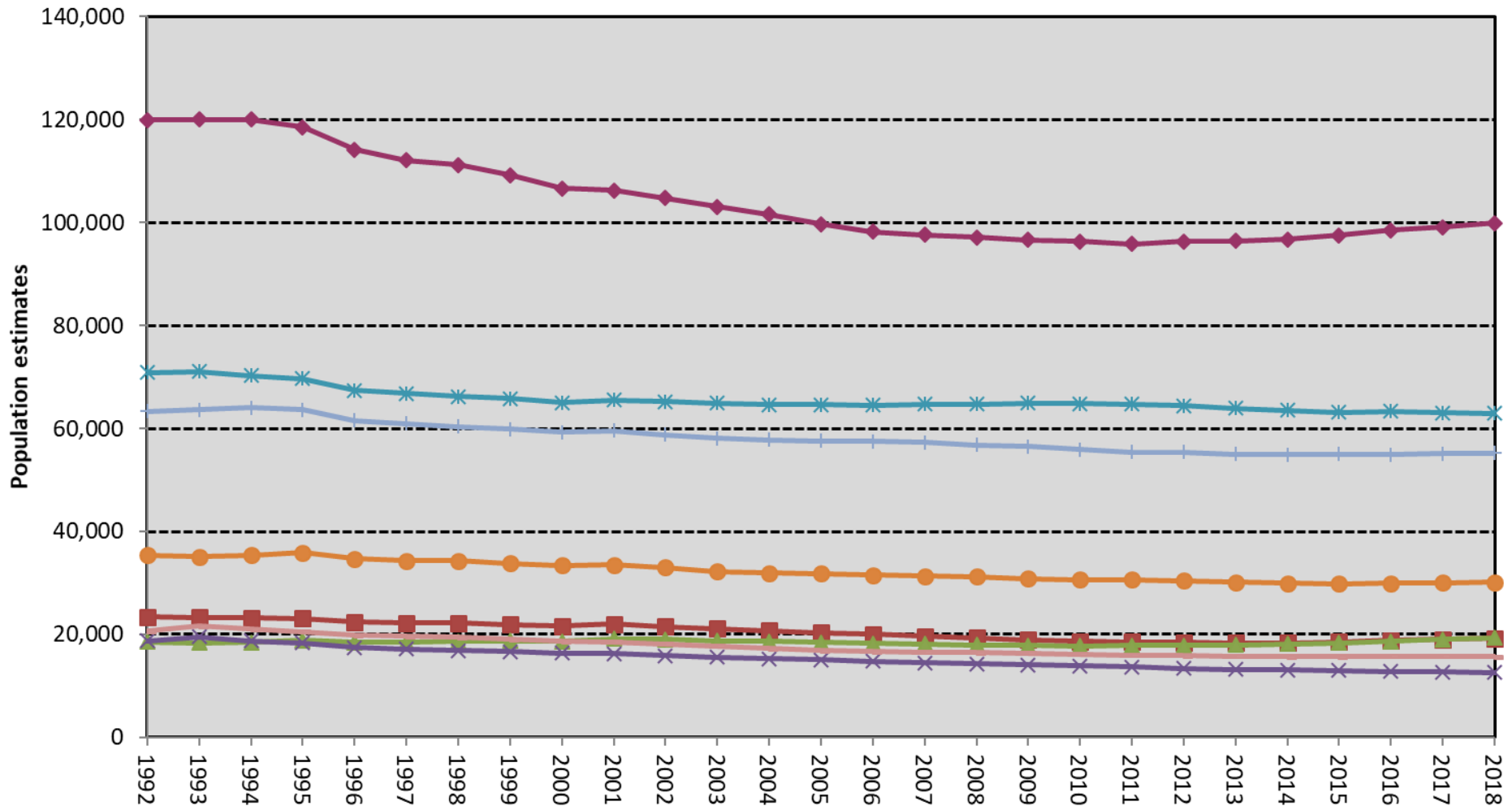
# Population estimate trends - numbers

Children's population (aged 0-15) in local authorities in Glasgow and Clyde Valley, 1992-2018

Source: National Records of Scotland

Legend:

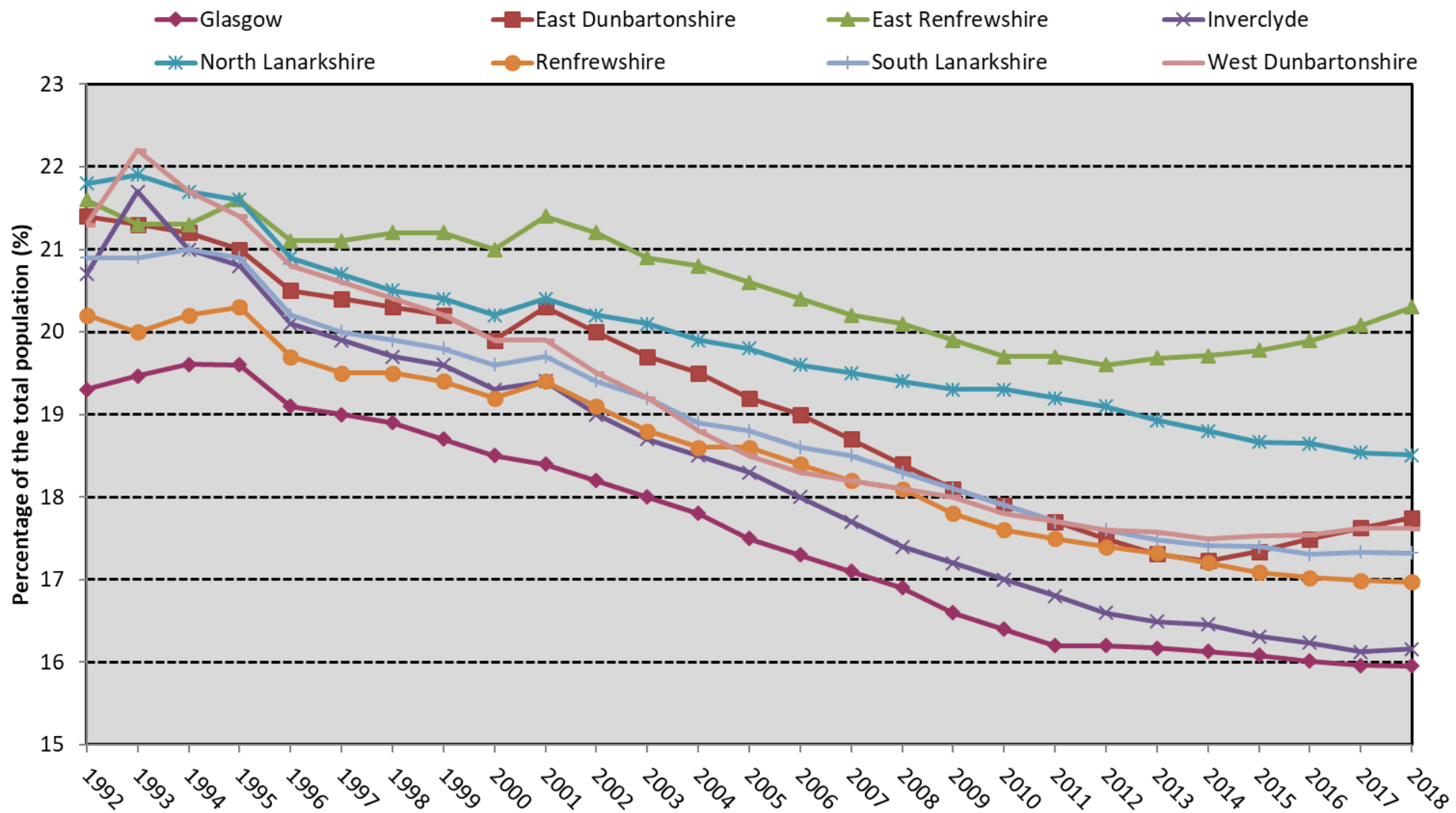
- Glasgow
- East Dunbartonshire
- East Renfrewshire
- Inverclyde
- North Lanarkshire
- Renfrewshire
- South Lanarkshire
- West Dunbartonshire



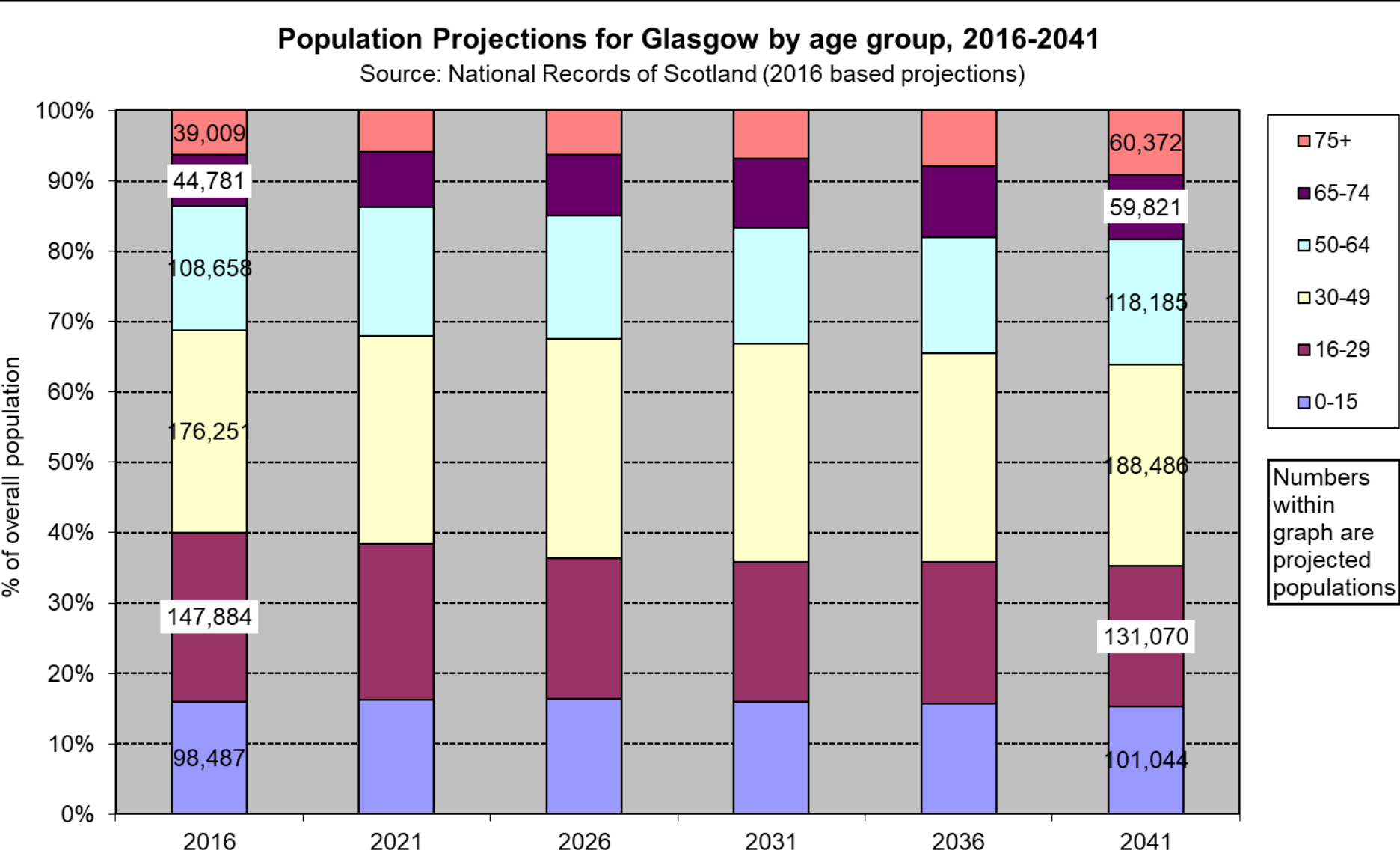
# Population estimate trends – as % of total popn

Children's population (aged 0-15) as a percentage of the total population in local authorities in Glasgow and Clyde Valley, 1992 - 2018

Source: National Records of Scotland



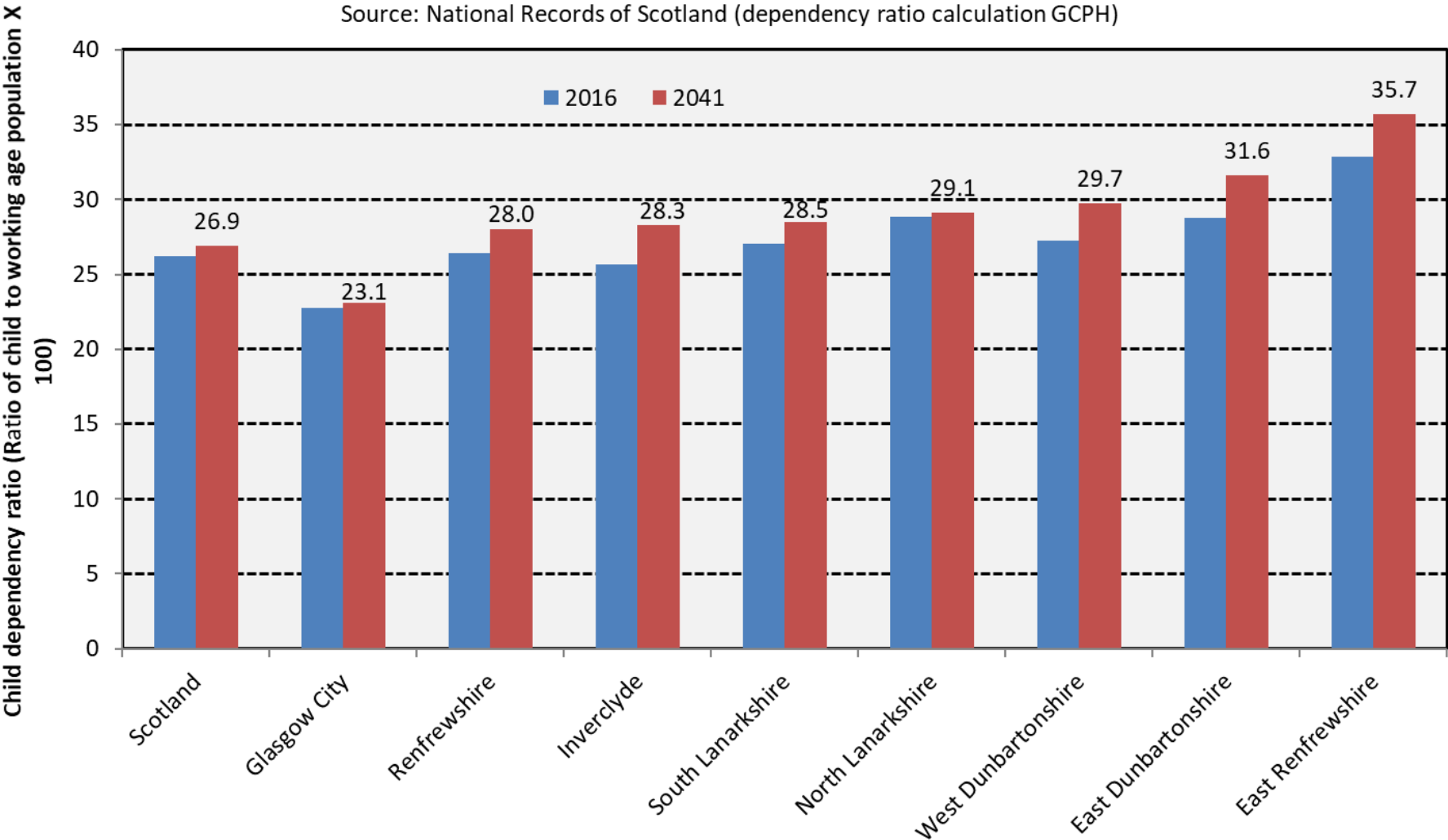
# Population projections – Glasgow City



# Population projections of child dependency ratios

Population projections of child dependency ratio for Glasgow and Clyde Valley Local Authorities, 2016-2041

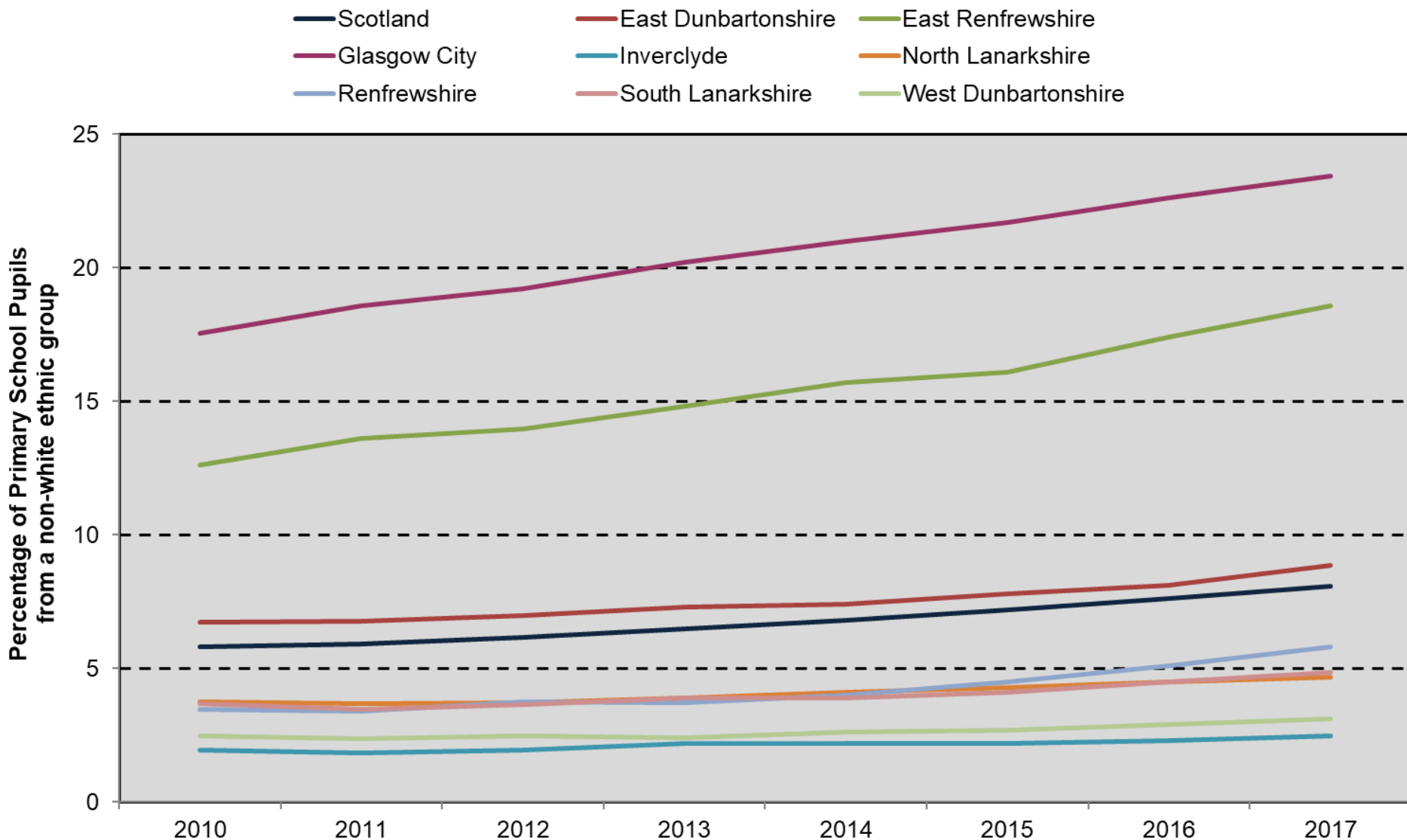
Source: National Records of Scotland (dependency ratio calculation GCPH)



# Primary school pupils from a non-white ethnic group

## Primary School pupils from a non-white ethnic group, 2010 - 2017

Source: Scottish Government

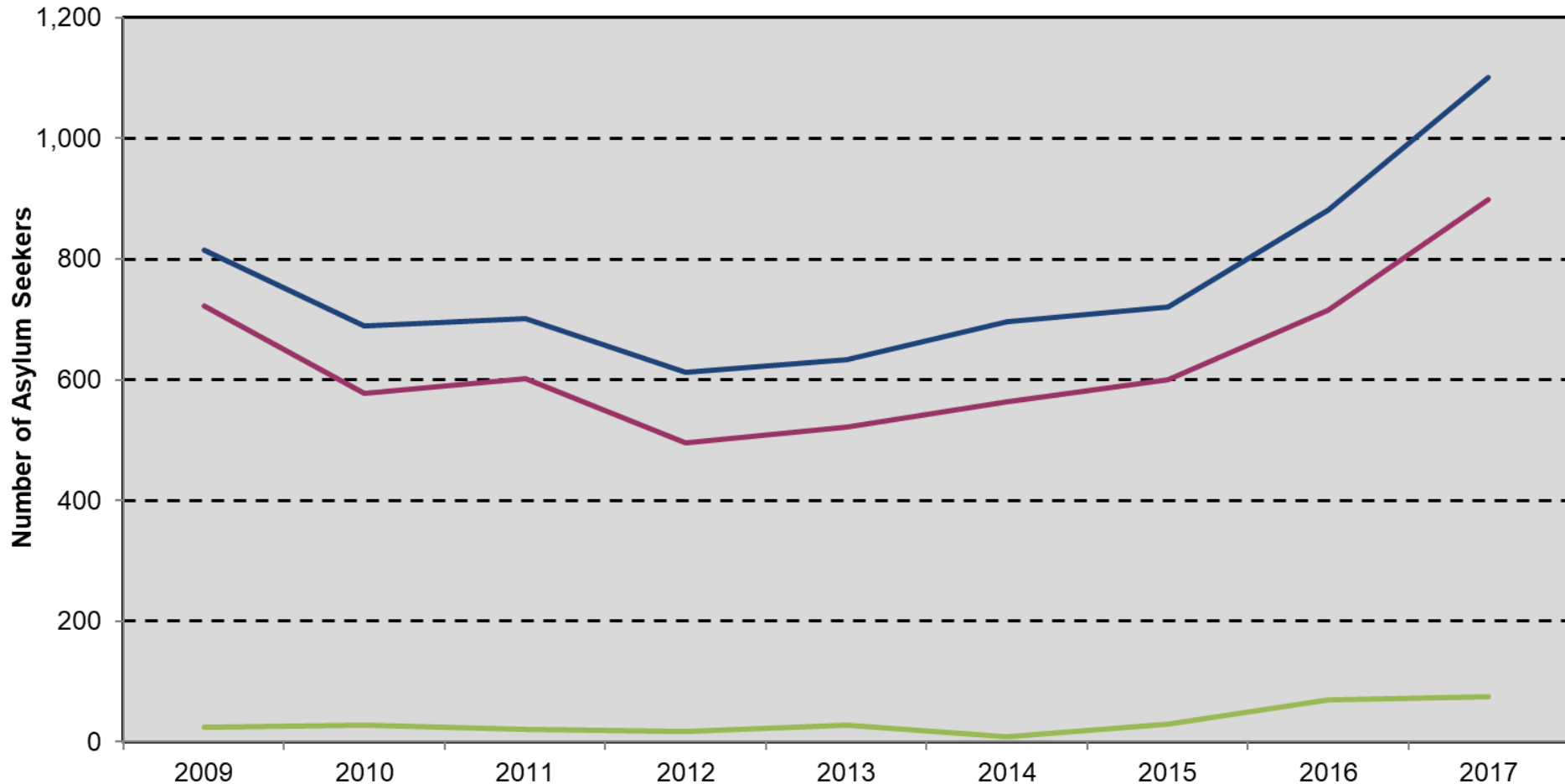


# Asylum seeker school children

## Number of Asylum Seekers Registered in Publicly-Funded Schools, 2009 - 2017

Source: Scottish Government

— Scotland — Glasgow City — Clyde Valley Local Authorities

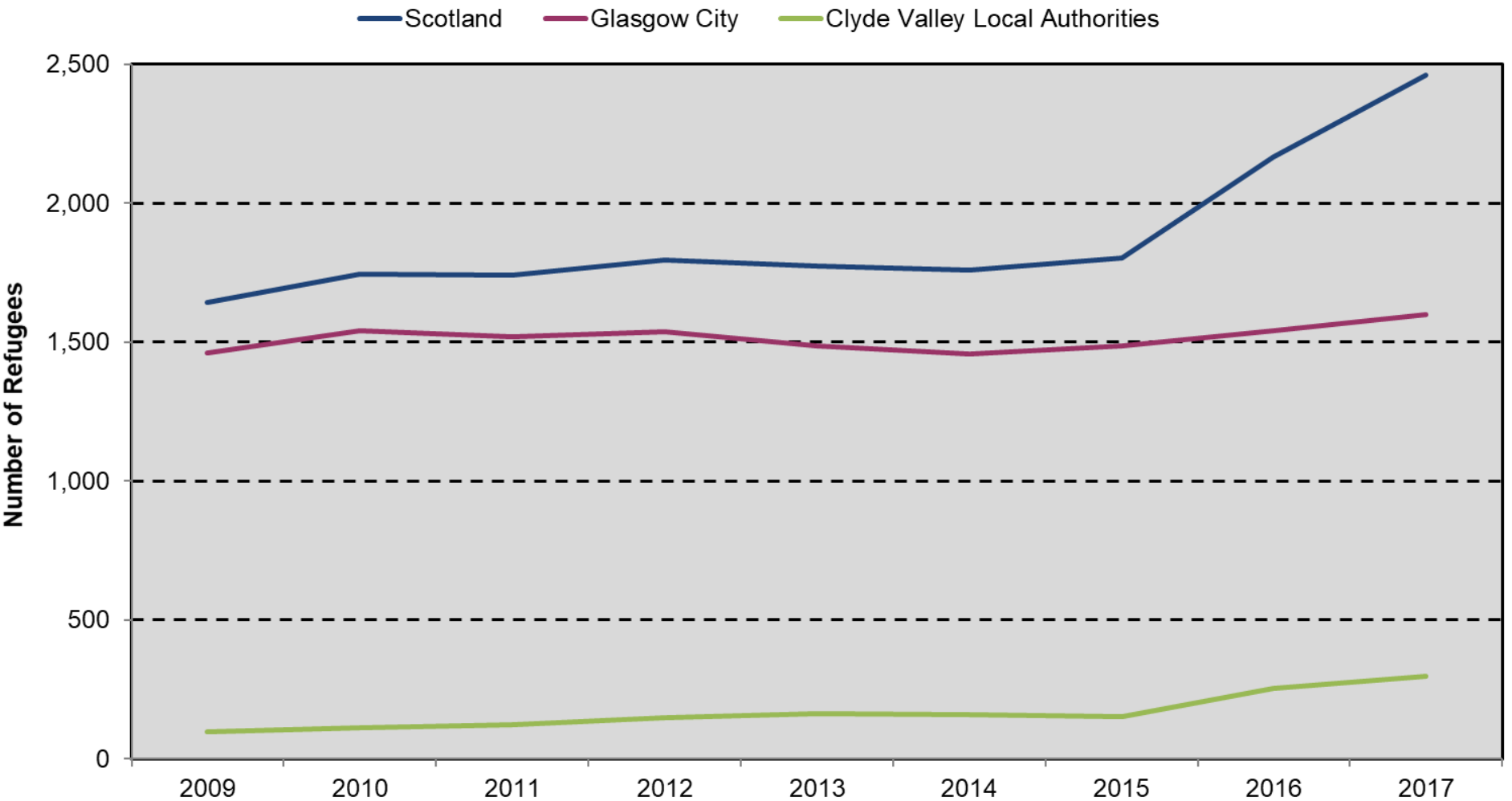


The 'Clyde Valley Local Authorities' are East Dunbartonshire, East Renfrewshire, Inverclyde, North Lanarkshire, Renfrewshire, South Lanarkshire and West Dunbartonshire

# Refugee school children

Number of Refugees Registered in Publicly-Funded Schools, 2009 - 2017

Source: Scottish Government

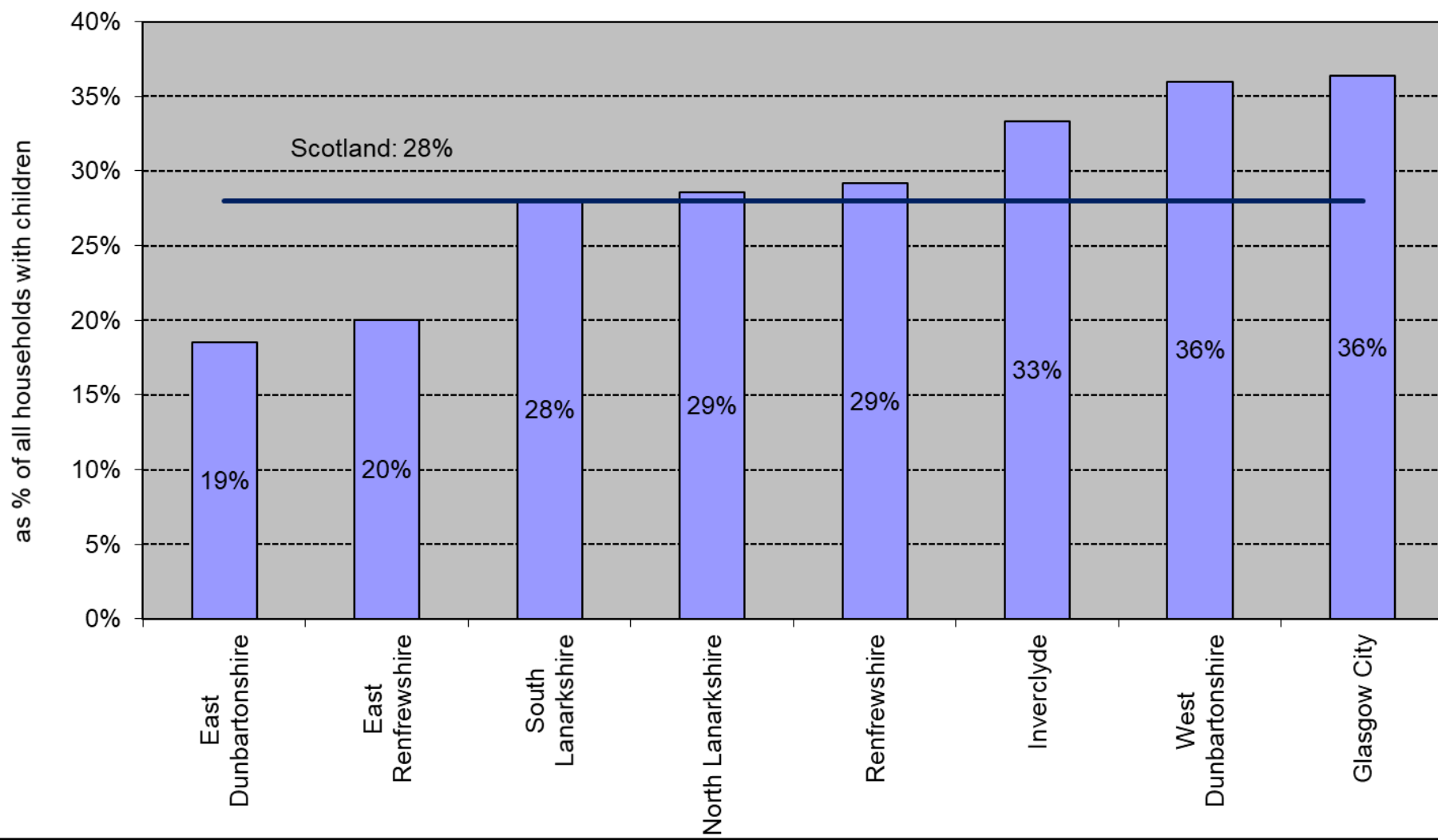


The 'Clyde Valley Local Authorities' are East Dunbartonshire, East Renfrewshire, Inverclyde, North Lanarkshire, Renfrewshire, South Lanarkshire and West Dunbartonshire

# Lone parent households

## Lone parent households as a percentage of all households with children, 2016

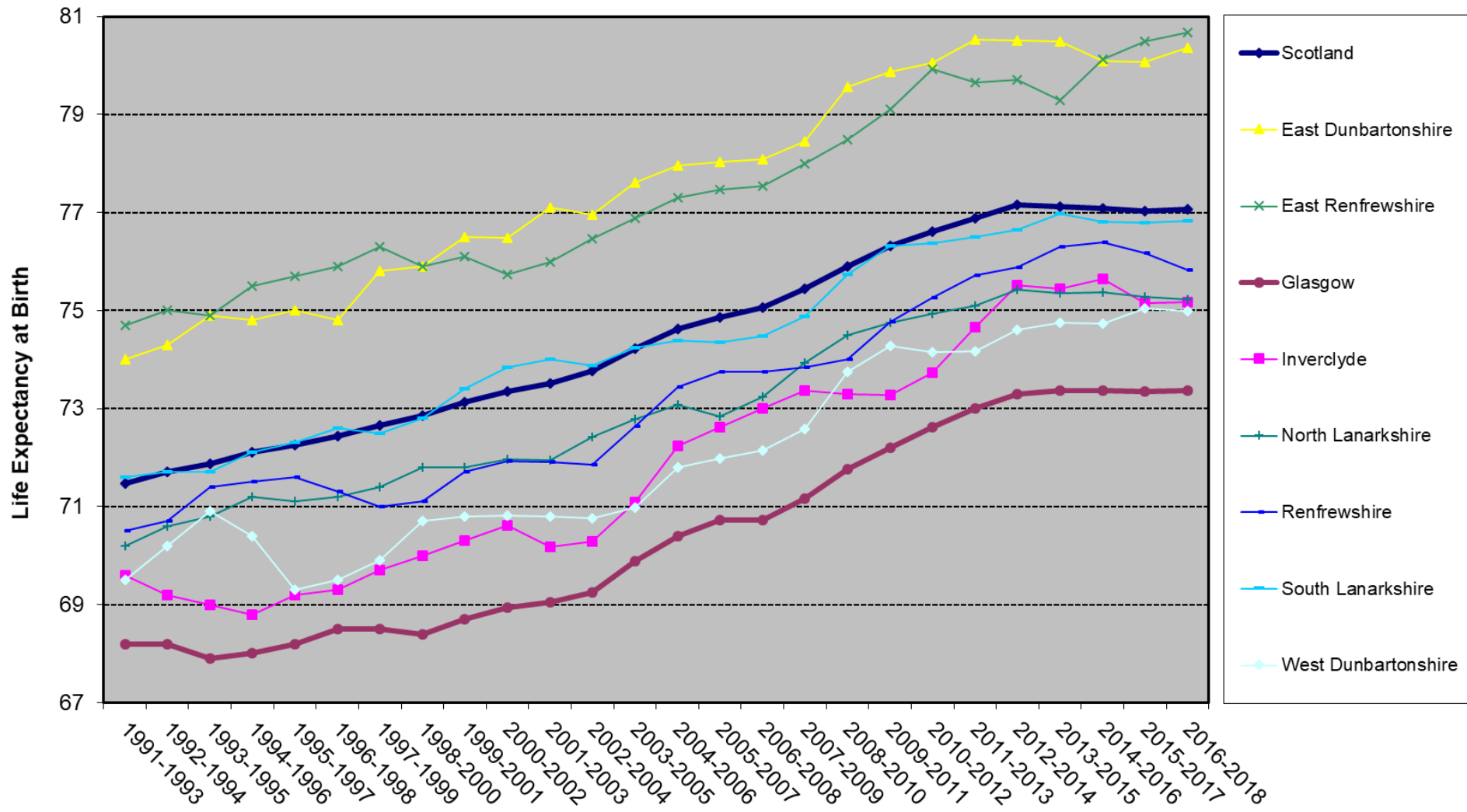
Source: National Records of Scotland (2016 based projections)



# Male life expectancy in the Glasgow City Region

Male Life Expectancy at Birth, Glasgow City Region Local Authorities, 1991-93 to 2016-18

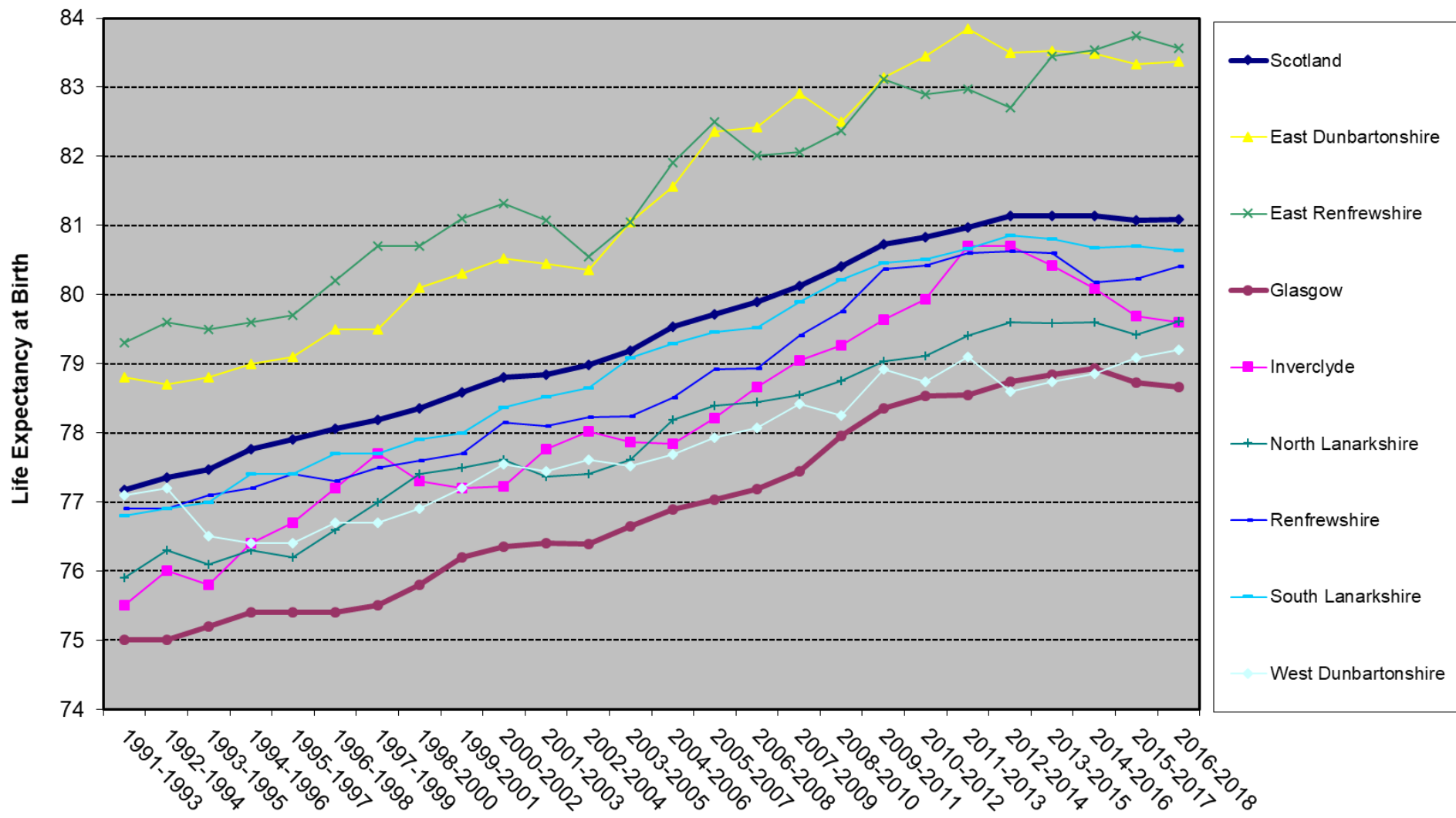
Source: ONS, National Records of Scotland



# Female life expectancy in the Glasgow City Region

Female Life Expectancy at Birth, Glasgow and Clyde Valley Local Authorities, 1991-93 to 2016-18

Source: ONS, National Records of Scotland

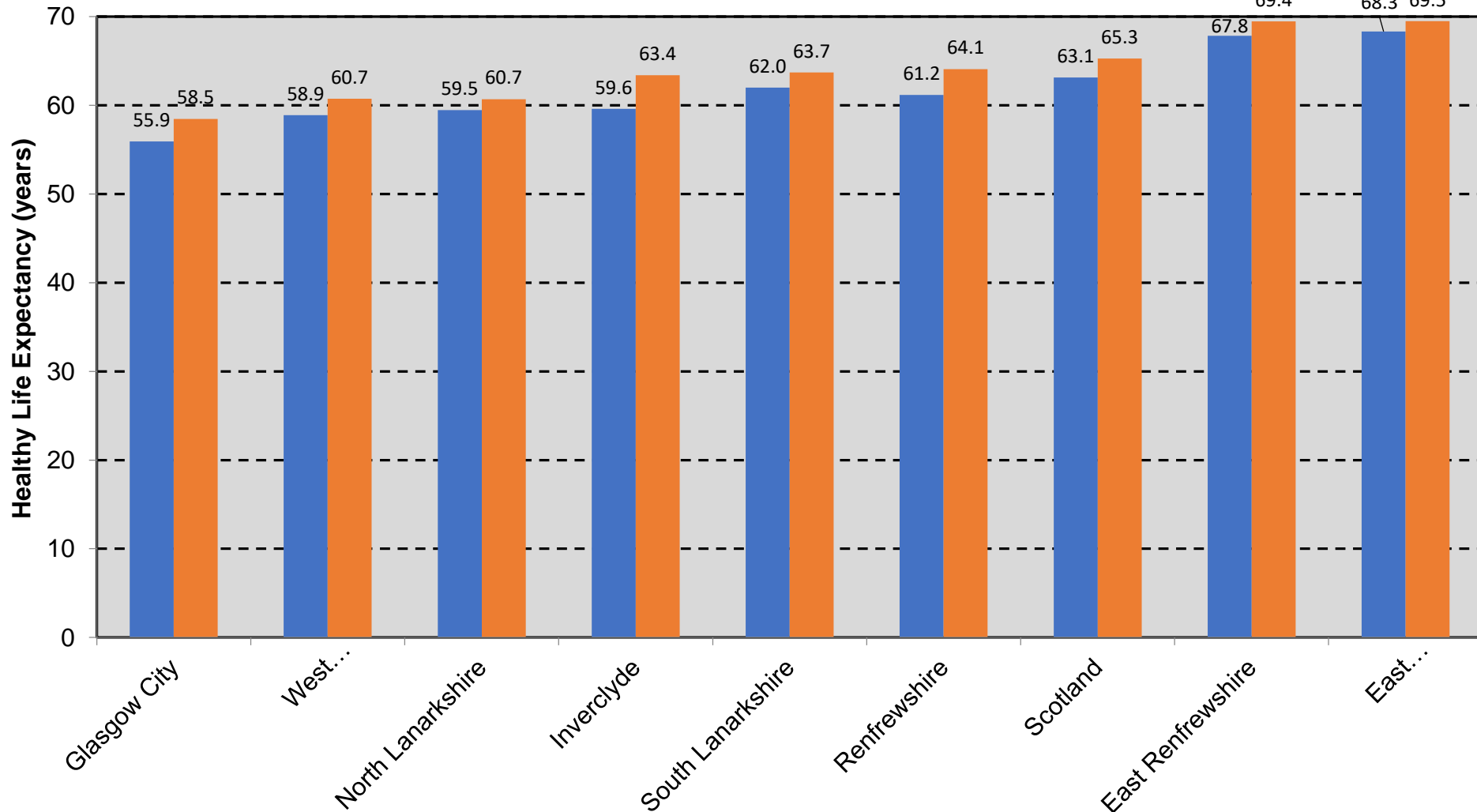


# Healthy life expectancy in Glasgow City Region

## Healthy Life Expectancy (2009 - 2013) by Gender

Source: ScotPHO

■ Male ■ Female



# Child populations by deprivation decile in Glasgow City Region

**Child population (under 16) estimates by deprivation decile, Glasgow City Region, 2018**

Source: National Records of Scotland and Scottish Index of Multiple Deprivation (SIMD 2016)

