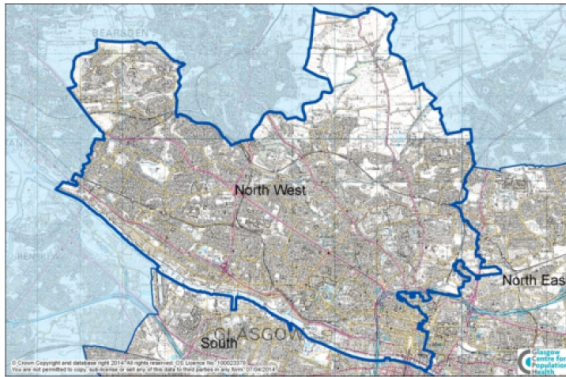


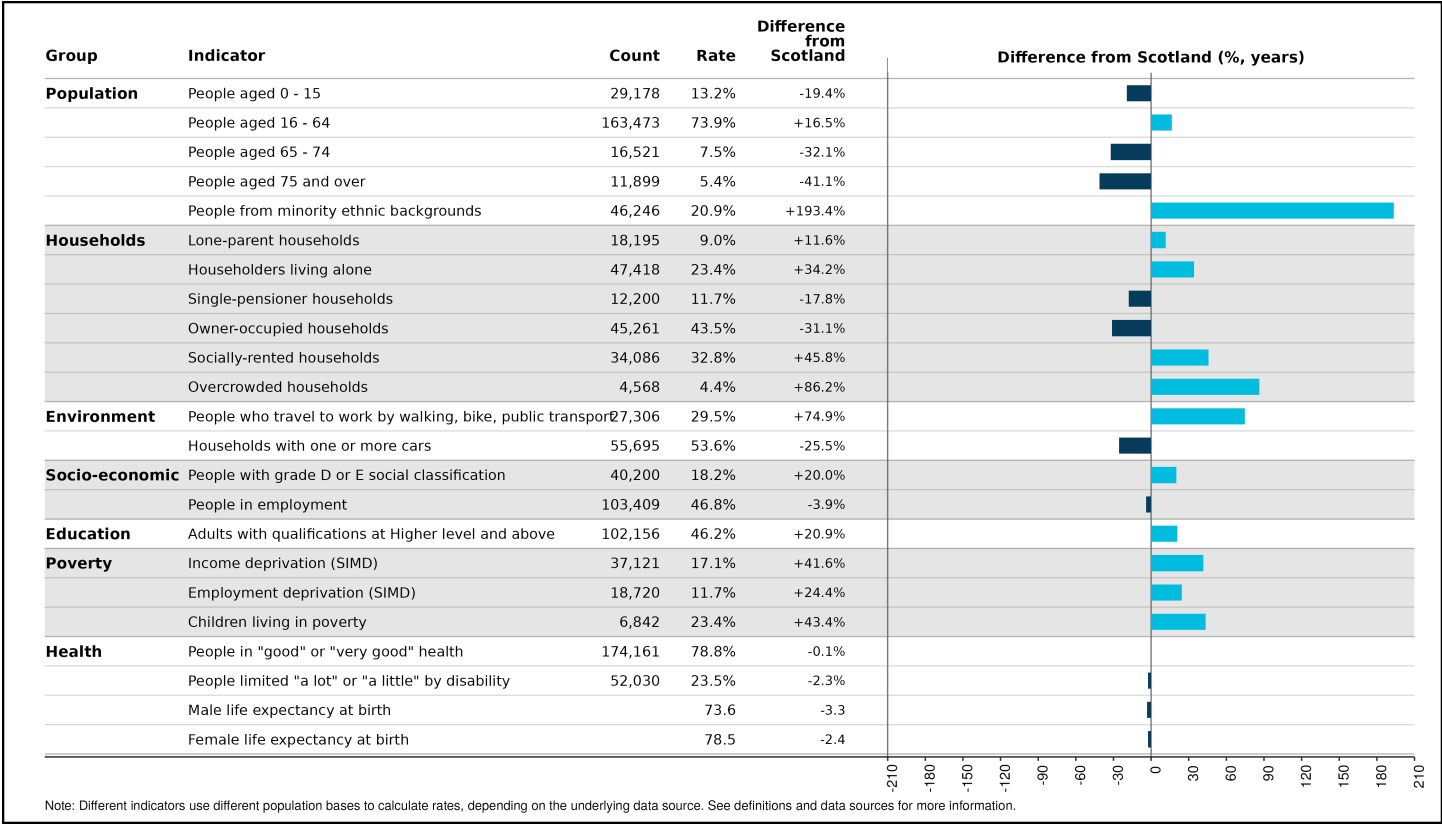
Glasgow North West

The Glasgow North West sector has a population of 221,071.



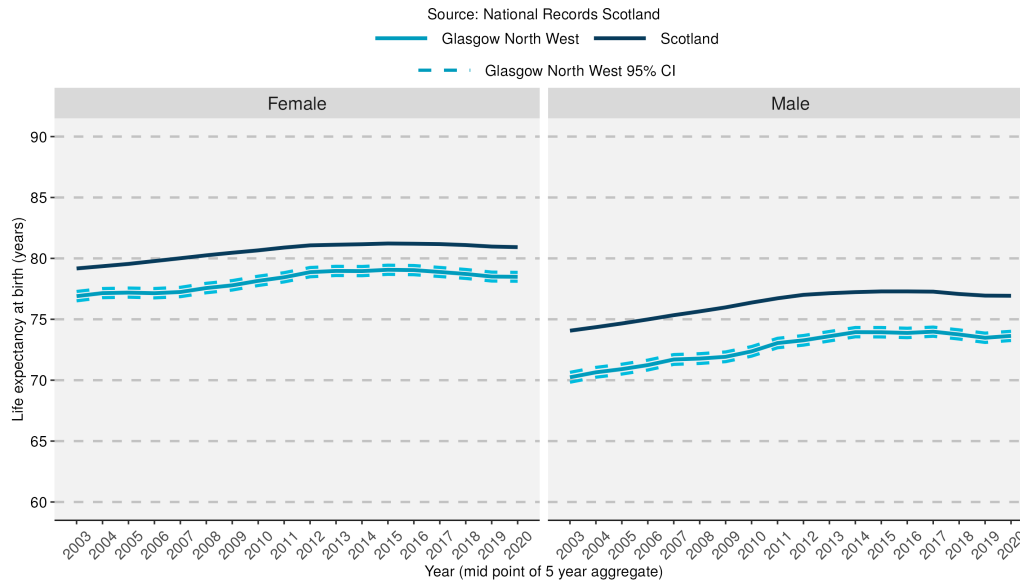
Comparisons with Scotland

Women in Glasgow North West live, on average, nearly five years longer than men. In this sector 21% of the population is from a minority ethnic background which is considerably higher than the Scottish average. Socially-rented households make up 33% of all households. There are 30% of people who travel to work by walking, bike or public transport, which is 75% higher than the Scottish average. In this area 23% of children are living in poverty and 24% of people are limited “a lot” or “a little” by disability.



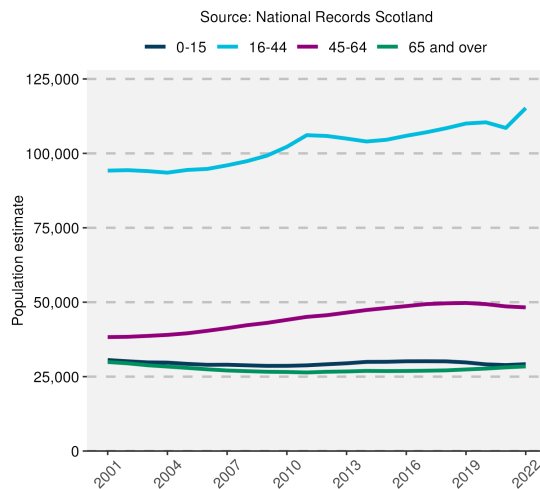
Area trends

Life expectancy at birth

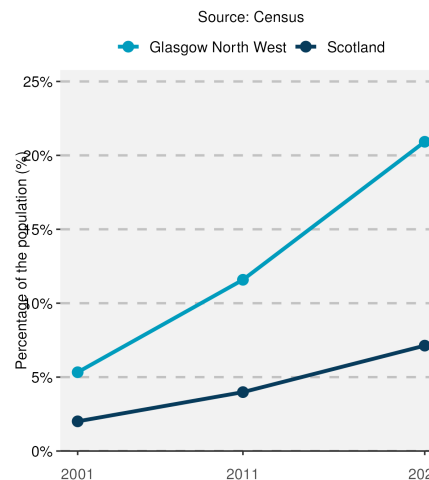


Life expectancy, since early 2000, has steadily increased for both males and females. From 2015 onward, year-on-year variations reduced, and recent data show only small fluctuations in Glasgow North West. Life expectancy is above the Glasgow average but below than the Scottish average.

Population by age group



Percentage of total population from a minority ethnic group



The overall population of Glasgow North West increased between 2001 and 2022. There are fluctuations throughout, however, there has been a higher increase in the population aged between 16-64. The percentage of the total population from a minority ethnic background increased from 5.3% in 2001 to 20.9% in 2022, this was above the Scottish average.

Notes

1. Data sources: Scottish Index of Multiple Deprivation (SIMD) 2020, Census 2022, 2011, and 2001, National Records of Scotland (NRS).
2. Populations presented in the population trend chart and used to calculate life expectancy estimates are taken from NRS small area population estimates and are based on: the 2001 and 2011 Census for years 2001-2010; and the 2011 and 2022 Census for years 2011-2022.
3. This publication has used small area population estimate data published by the NRS on 21 November 2021. The NRS update their small area population estimates and previous estimates on an annual basis therefore this data is only representative of the data published upon this date. For further information see: <https://www.nrscotland.gov.uk/publications/small-area-population-estimates-mid-2022/>
4. The Income deprivation and Employment deprivation indicators are derived from SIMD 2020, more information on this deprivation index can be found at: <https://www.gov.scot/collections/scottish-index-of-multiple-deprivation-2020/>.
5. Life expectancies are calculated based on population estimates and death registrations. 95% confidence intervals have been added on the graphs to the neighbourhood data to give an indication of their accuracy. The 95% confidence interval for the Glasgow and/or Scotland comparison line has been removed due to the size of the population. This resulted in the confidence interval sitting on the data line making it unreadable. The x-axes of the life expectancy graphs give the mid-year for each life expectancy estimate e.g. 2020 represents the life expectancy estimate for the period 2018-2022.
6. A notes and definitions document providing further information on the variables presented in the profile can be found in the Profiles section of the Understanding Glasgow website: <https://www.understandingglasgow.com/profiles/neighbourhood-profiles>.