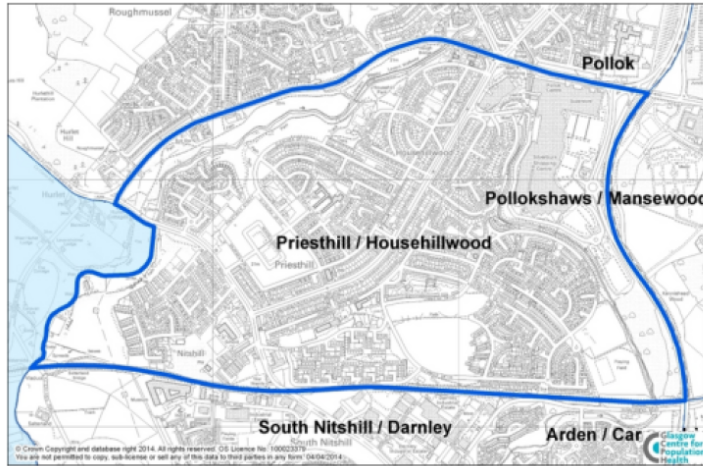


Priesthill and Househillwood

Priesthill and Househillwood is a neighbourhood in the south of Glasgow with a population of 9,730.



Neighbourhood comparisons with Glasgow

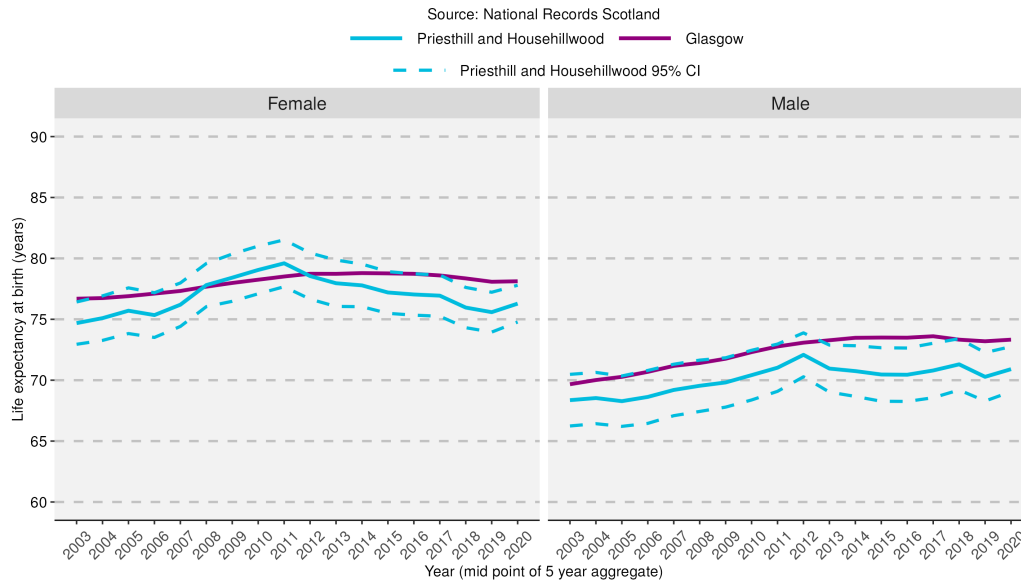
Women in Priesthill and Househillwood live, on average, nearly five and a half years longer than men. This area has a high proportion of lone-parent households, 74% above the Glasgow average as well as a higher than average number of socially-rented households. There are high levels of income and employment deprivation in this area.

Group	Indicator	Count	Rate	Difference from Glasgow	Difference from Glasgow (% , years)
Population	People aged 0 - 15	2,057	21.1%	+36.8%	36.8%
	People aged 16 - 64	6,442	66.2%	-6.1%	-6.1%
	People aged 65 - 74	738	7.6%	-6.8%	-6.8%
	People aged 75 and over	493	5.1%	-14.5%	-14.5%
	People from minority ethnic backgrounds	1,249	12.9%	-33.1%	-33.1%
Households	Lone-parent households	1,718	17.8%	+73.7%	73.7%
	Householders living alone	1,546	16.0%	-25.7%	-25.7%
	Single-pensioner households	478	11.2%	-5.9%	-5.9%
	Owner-occupied households	1,613	37.8%	-19.1%	-19.1%
	Socially-rented households	2,397	56.2%	+61.2%	61.2%
	Overcrowded households	220	5.2%	+9.5%	9.5%
Environment	People who travel to work by walking, bike, public transport	847	21.3%	-19.6%	-19.6%
	Households with one or more cars	2,521	59.1%	+6.0%	6.0%
Socio-economic	People with grade D or E social classification	3,217	33.2%	+51.8%	51.8%
	People in employment	4,132	42.7%	-10.1%	-10.1%
Education	Adults with qualifications at Higher level and above	2,457	25.4%	-36.5%	-36.5%
Poverty	Income deprivation (SIMD)	2,745	29.6%	+51.6%	51.6%
	Employment deprivation (SIMD)	1,182	19.5%	+43.7%	43.7%
	Children living in poverty	613	29.8%	+11.6%	11.6%
Health	People in "good" or "very good" health	6,850	70.7%	-6.9%	-6.9%
	People limited "a lot" or "a little" by disability	3,101	32.0%	+23.0%	23.0%
	Male life expectancy at birth		70.9	-2.4	-2.4
	Female life expectancy at birth		76.3	-1.9	-1.9

Note: Different indicators use different population bases to calculate rates, depending on the underlying data source. See definitions and data sources for more information.

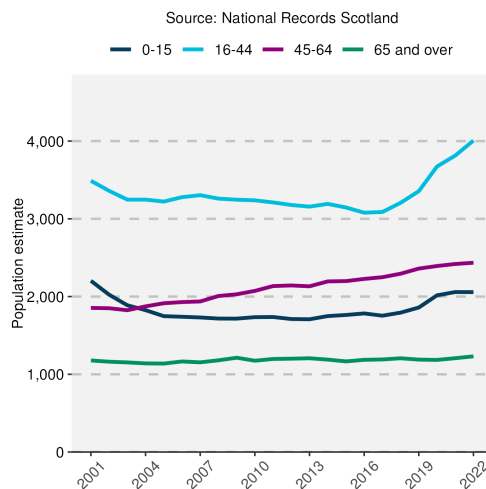
Neighbourhood/Area trends

Life expectancy at birth

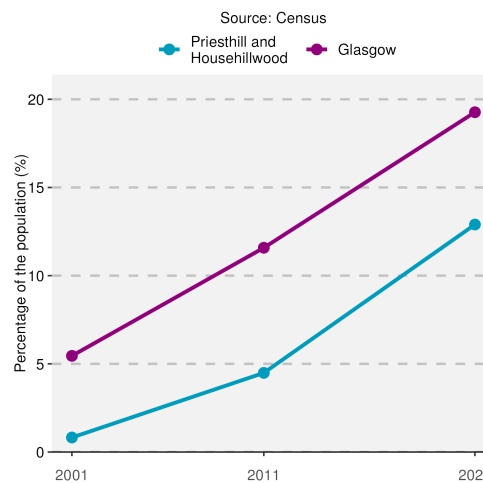


Life expectancy for females has risen in recent years in Priesthill and Househillwood but is below the Glasgow average. In the most recent period shown (2018-2022), life expectancy in this area is lower than the Scottish average.

Population by age group



Percentage of total population from a minority ethnic group



The overall population of Priesthill and Househillwood increased between 2001 and 2022. This can be attributed to an increase in the population aged 16 and over. The percentage of the total neighbourhood population from a minority ethnic background increased from 0.8% in 2001 to 12.9% in 2022 but remained below the Glasgow average.

Notes

1. Data sources: Scottish Index of Multiple Deprivation (SIMD) 2020, Census 2022, 2011, and 2001, National Records of Scotland (NRS).
2. Populations presented in the population trend chart and used to calculate life expectancy estimates are taken from NRS small area population estimates and are based on: the 2001 and 2011 Census for years 2001-2010; and the 2011 and 2022 Census for years 2011-2022.
3. This publication has used small area population estimate data published by the NRS on 21 November 2021. The NRS update their small area population estimates and previous estimates on an annual basis therefore this data is only representative of the data published upon this date. For further information see: <https://www.nrscotland.gov.uk/publications/small-area-population-estimates-mid-2022/>
4. The Income deprivation and Employment deprivation indicators are derived from SIMD 2020, more information on this deprivation index can be found at: <https://www.gov.scot/collections/scottish-index-of-multiple-deprivation-2020/>.
5. Life expectancies are calculated based on population estimates and death registrations. 95% confidence intervals have been added on the graphs to the neighbourhood data to give an indication of their accuracy. The 95% confidence interval for the Glasgow and/or Scotland comparison line has been removed due to the size of the population. This resulted in the confidence interval sitting on the data line making it unreadable. The x-axes of the life expectancy graphs give the mid-year for each life expectancy estimate e.g. 2020 represents the life expectancy estimate for the period 2018-2022.
6. A notes and definitions document providing further information on the variables presented in the profile can be found in the Profiles section of the Understanding Glasgow website: <https://www.understandingglasgow.com/profiles/neighbourhood-profiles>.