

Broomhill and Partick West

Broomhill and Partick West is a neighbourhood in the north west of Glasgow with a population of 12,499.



Neighbourhood comparisons with Glasgow

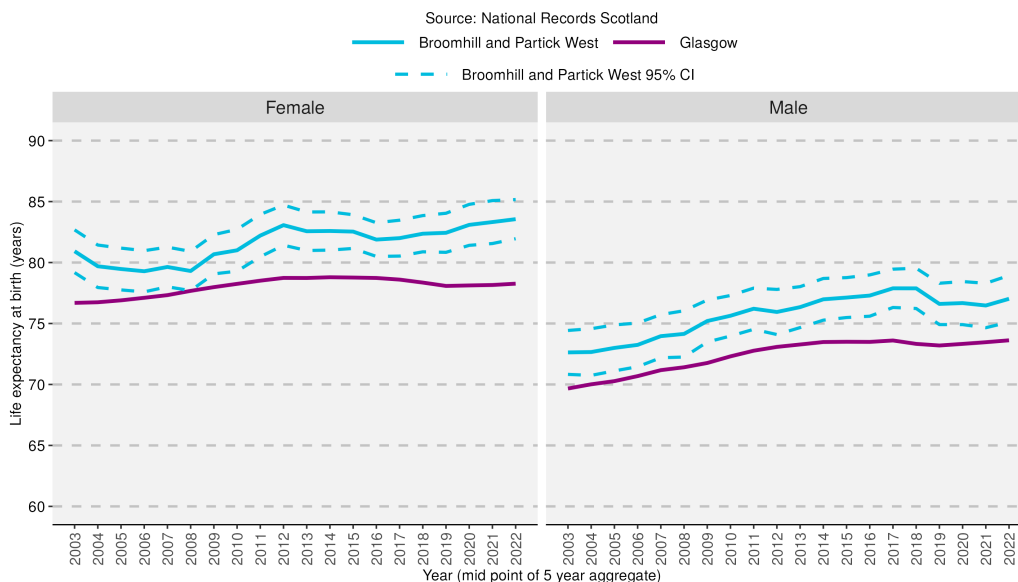
Women in Broomhill and Partick West live, on average, six and a half years longer than men. The neighbourhood has a particularly large working-age population (aged 16-64). The number of adults qualified to Higher level and above is 37% above the Glasgow average. More than half of households are people living alone.

Group	Indicator	Count	Rate	Difference from Glasgow	Difference from Glasgow (% , years)
Population	People aged 0 - 15	1,349	10.8%	-29.0%	
	People aged 16 - 64	9,473	75.8%	+7.0%	
	People aged 65 - 74	1,020	8.2%	-0.7%	
	People aged 75 and over	657	5.3%	-8.9%	
	People from minority ethnic backgrounds	1,935	16.0%	-17.2%	
Households	Lone-parent households	256	3.6%	-46.5%	
	Householders living alone	3,768	53.2%	+21.6%	
	Single-pensioner households	713	10.1%	-15.5%	
	Owner-occupied households	3,392	47.9%	+2.4%	
	Socially-rented households	1,370	19.3%	-44.6%	
	Overcrowded households	207	2.9%	-38.0%	
Environment	People who travel to work by walking, bike, public transport	1,971	29.9%	+12.9%	
	Households with one or more cars	3,968	56.0%	+0.4%	
Socio-economic	People with grade D or E social classification	901	15.3%	-46.8%	
	People in employment	7,004	64.7%	+15.4%	
Education	Adults with qualifications at Higher level and above	8,582	79.3%	+36.6%	
Poverty	Income deprivation (SIMD)	1,444	11.7%	-40.0%	
	Employment deprivation (SIMD)	843	8.9%	-34.0%	
	Children living in poverty	181	13.7%	-48.6%	
Health	People in "good" or "very good" health	9,968	82.2%	+8.2%	
	People limited "a lot" or "a little" by disability	2,464	20.3%	-21.9%	
	Male life expectancy at birth		77.0	+3.4	
	Female life expectancy at birth		83.6	+5.3	

Note: Different indicators use different population bases to calculate rates, depending on the underlying data source. See definitions and data sources for more information.

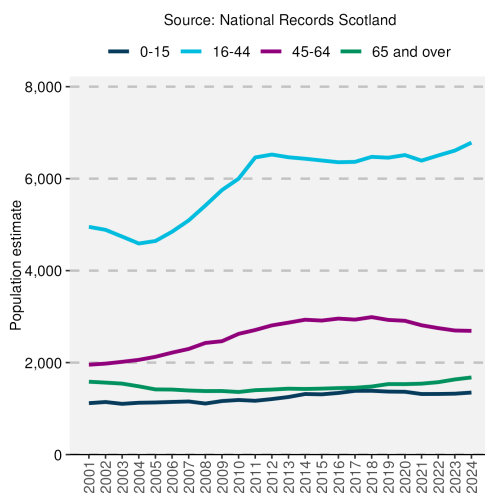
Neighbourhood/Area trends

Life expectancy at birth

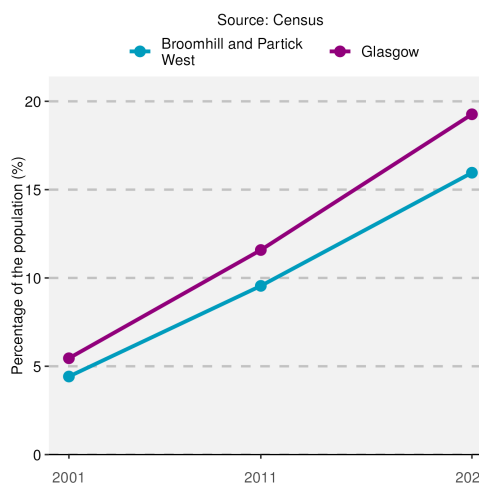


Life expectancy for females has risen in recent years in Broomhill and Partick West and is above the Glasgow average. In the most recent period shown (2020-2024), life expectancy in this area is higher for females than the Scottish average.

Population by age group



Percentage of total population from minority ethnic backgrounds



The overall population of Broomhill and Partick West increased between 2001 and 2024. This can be attributed to an increase in the population aged under 65. The percentage of the total neighbourhood population from a minority ethnic background increased from 4.4% in 2001 to 16% in 2022 but remained below the Glasgow average.

Notes

1. Data sources: Scottish Index of Multiple Deprivation (SIMD) 2020, Census 2022, 2011, and 2001, National Records of Scotland (NRS).
2. Populations presented in the population trend chart and used to calculate life expectancy estimates are taken from NRS small area population estimates and are based on: the 2001 and 2011 Census for years 2001-2010; and the 2011 and 2022 Census for years 2011-2024.
3. This publication has used small area population estimate data published by the NRS on 24 February 2026. The NRS update their small area population estimates and previous estimates on an annual basis therefore this data is only representative of the data published upon this date. For further information see: <https://www.nrscotland.gov.uk/publications/small-area-population-estimates-mid-2023-and-mid-2024-2011-data-zones/>
4. The Income deprivation and Employment deprivation indicators are derived from SIMD 2020, more information on this deprivation index can be found at: <https://www.gov.scot/collections/scottish-index-of-multiple-deprivation-2020/>.
5. Life expectancies are calculated based on population estimates and death registrations. 95% confidence intervals have been added on the graphs to the neighbourhood data to give an indication of their accuracy. The 95% confidence interval for the Glasgow and/or Scotland comparison line has been removed due to the size of the population. This resulted in the confidence interval sitting on the data line making it unreadable. The x-axes of the life expectancy graphs give the mid-year for each life expectancy estimate e.g. 2020 represents the life expectancy estimate for the period 2018-2022.
6. A notes and definitions document providing further information on the variables presented in the profile can be found in the Profiles section of the Understanding Glasgow website: <https://www.understandingglasgow.com/profiles/neighbourhood-profiles>.