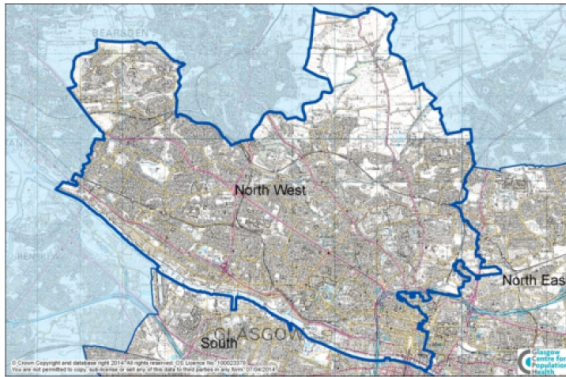


Glasgow North West

The Glasgow North West sector has a population of 234,296.



Comparisons with Scotland

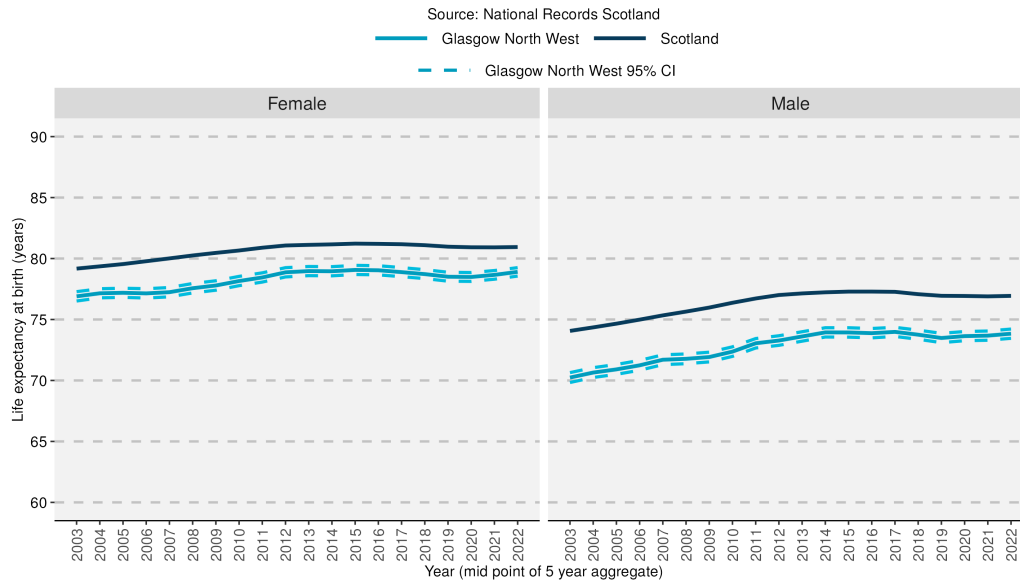
Women in Glasgow North West live, on average, five years longer than men. In this sector 21% of the population is from a minority ethnic background which is considerably higher than the Scottish average. Socially-rented households make up 33% of all households. There are 30% of people who travel to work by walking, bike, or public transport, which is 75% higher than the Scottish average. In this area 23% of children are living in poverty and 24% of people are limited “a lot” or “a little” by disability.

Group	Indicator	Count	Rate	Difference from Scotland	Difference from Scotland (% , years)	
					%	years
Population	People aged 0 - 15	29,900	12.8%	-21.1%	-21.1%	
	People aged 16 - 64	174,858	74.6%	+17.9%	17.9%	
	People aged 65 - 74	17,288	7.4%	-33.1%	-33.1%	
	People aged 75 and over	12,250	5.2%	-45.0%	-45.0%	
	People from minority ethnic backgrounds	46,246	20.9%	+193.4%	193.4%	
Households	Lone-parent households	6,024	5.8%	-0.2%	-0.2%	
	Householders living alone	47,454	45.7%	+23.2%	23.2%	
	Single-pensioner households	12,200	11.7%	-17.8%	-17.8%	
	Owner-occupied households	45,261	43.5%	-31.1%	-31.1%	
	Socially-rented households	34,086	32.8%	+45.8%	45.8%	
	Overcrowded households	4,568	4.4%	+86.2%	86.2%	
Environment	People who travel to work by walking, bike, public transport	27,306	29.5%	+74.9%	74.9%	
	Households with one or more cars	55,695	53.6%	-25.5%	-25.5%	
Socio-economic	People with grade D or E social classification	20,917	25.2%	+9.6%	9.6%	
	People in employment	103,409	53.8%	-7.6%	-7.6%	
Education	Adults with qualifications at Higher level and above	128,384	66.8%	+17.5%	17.5%	
Poverty	Income deprivation (SIMD)	37,121	17.1%	+41.7%	41.7%	
	Employment deprivation (SIMD)	18,720	11.7%	+24.4%	24.4%	
	Children living in poverty	6,842	23.4%	+43.4%	43.4%	
Health	People in "good" or "very good" health	174,161	78.8%	-0.1%	-0.1%	
	People limited "a lot" or "a little" by disability	52,030	23.5%	-2.3%	-2.3%	
	Male life expectancy at birth		73.8	-3.1	-3.1	
	Female life expectancy at birth		78.9	-2.0	-2.0	

Note: Different indicators use different population bases to calculate rates, depending on the underlying data source. See definitions and data sources for more information.

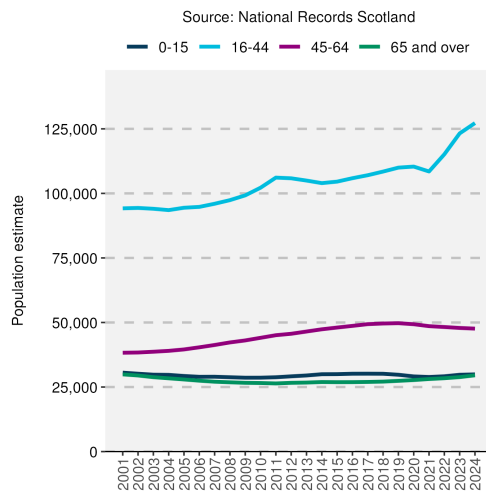
Area trends

Life expectancy at birth

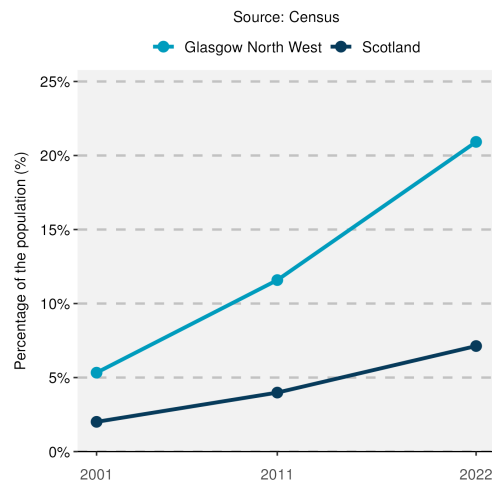


Life expectancy, since early 2001, has steadily increased for both males and females. From 2015 onward, year-on-year variations reduced, and recent data show only small fluctuations in Glasgow North West. Life expectancy is above the Glasgow average but below the Scottish average.

Population by age group



Percentage of total population from minority ethnic backgrounds



The overall population of Glasgow North West increased between 2001 and 2024. There are fluctuations throughout, however, there has been a higher increase in the population aged between 16-64. The percentage of the total population from a minority ethnic background increased from 5.3% in 2001 to 20.9% in 2022, this was above the Scottish average.

Notes

1. Data sources: Scottish Index of Multiple Deprivation (SIMD) 2020, Census 2022, 2011, and 2001, National Records of Scotland (NRS).
2. Populations presented in the population trend chart and used to calculate life expectancy estimates are taken from NRS small area population estimates and are based on: the 2001 and 2011 Census for years 2001-2010; and the 2011 and 2022 Census for years 2011-2024.
3. This publication has used small area population estimate data published by the NRS on 24 February 2026. The NRS update their small area population estimates and previous estimates on an annual basis therefore this data is only representative of the data published upon this date. For further information see: <https://www.nrscotland.gov.uk/publications/small-area-population-estimates-mid-2023-and-mid-2024-2011-data-zones/>
4. The Income deprivation and Employment deprivation indicators are derived from SIMD 2020, more information on this deprivation index can be found at: <https://www.gov.scot/collections/scottish-index-of-multiple-deprivation-2020/>.
5. Life expectancies are calculated based on population estimates and death registrations. 95% confidence intervals have been added on the graphs to the neighbourhood data to give an indication of their accuracy. The 95% confidence interval for the Glasgow and/or Scotland comparison line has been removed due to the size of the population. This resulted in the confidence interval sitting on the data line making it unreadable. The x-axes of the life expectancy graphs give the mid-year for each life expectancy estimate e.g. 2020 represents the life expectancy estimate for the period 2018-2022.
6. A notes and definitions document providing further information on the variables presented in the profile can be found in the Profiles section of the Understanding Glasgow website: <https://www.understandingglasgow.com/profiles/neighbourhood-profiles>.