

# Govanhill

Govanhill is a neighbourhood in the south of Glasgow with a population of 17,334.



## Neighbourhood comparisons with Glasgow

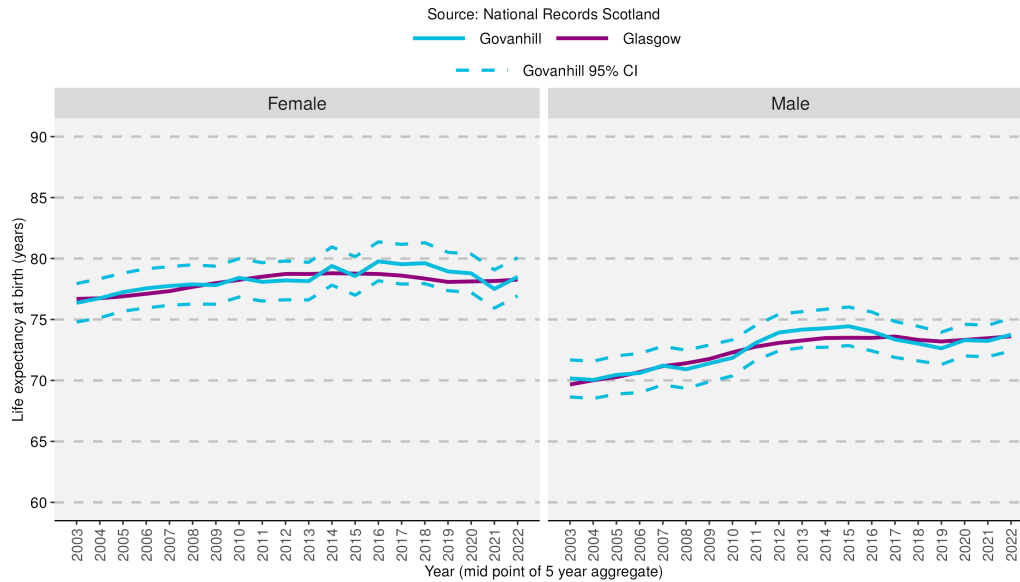
Women in Govanhill live, on average, four and a half years longer than men. The area has a high proportion of overcrowded households and children living in poverty compared with the Glasgow average. In this area 44% of the population of Govanhill are from a minority ethnic background, a considerably larger proportion than the Glasgow average.

Group	Indicator	Count	Rate	Difference from Glasgow	Difference from Glasgow (% , years)	
					%	years
<b>Population</b>	People aged 0 - 15	3,347	19.3%	+27.0%	27	0
	People aged 16 - 64	12,458	71.9%	+1.5%	15	0
	People aged 65 - 74	948	5.5%	-33.5%	-33	0
	People aged 75 and over	581	3.4%	-41.9%	-42	0
	People from minority ethnic backgrounds	7,081	44.1%	+129.1%	129	0
<b>Households</b>	Lone-parent households	373	4.8%	-28.4%	-28	0
	Householders living alone	3,839	49.7%	+13.8%	14	0
	Single-pensioner households	688	8.9%	-25.1%	-25	0
	Owner-occupied households	2,627	34.0%	-27.2%	-27	0
	Socially-rented households	3,040	39.4%	+13.0%	13	0
	Overcrowded households	812	10.5%	+123.4%	123	0
<b>Environment</b>	People who travel to work by walking, bike, public transport	2,343	33.4%	+26.0%	26	0
	Households with one or more cars	3,459	44.8%	-19.6%	-20	0
<b>Socio-economic</b>	People with grade D or E social classification	2,216	33.5%	+16.3%	16	0
	People in employment	7,420	57.2%	+1.9%	2	0
<b>Education</b>	Adults with qualifications at Higher level and above	7,638	58.9%	+1.4%	1	0
<b>Poverty</b>	Income deprivation (SIMD)	3,562	23.1%	+18.2%	18	0
	Employment deprivation (SIMD)	1,669	15.5%	+14.4%	14	0
	Children living in poverty	2,003	64.7%	+142.1%	142	0
<b>Health</b>	People in "good" or "very good" health	12,230	76.2%	+0.3%	0	4.5
	People limited "a lot" or "a little" by disability	4,015	25.0%	-3.9%	-4	0
	Male life expectancy at birth		73.8	+0.1	0	0.1
	Female life expectancy at birth		78.5	+0.2	0	0.2

Note: Different indicators use different population bases to calculate rates, depending on the underlying data source. See definitions and data sources for more information.

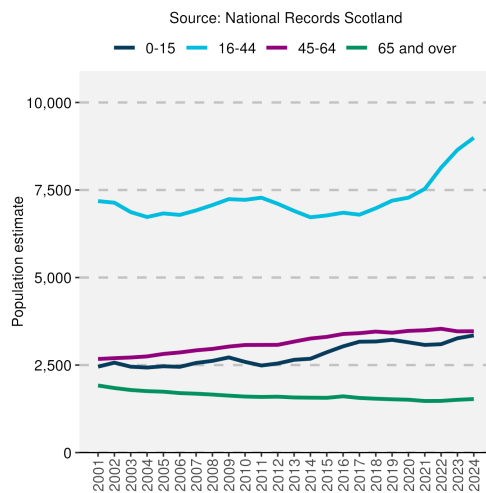
# Neighbourhood/Area trends

## Life expectancy at birth

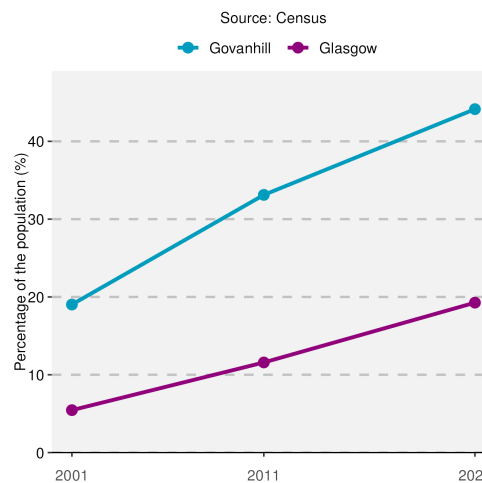


Life expectancy for females has fallen in recent years in Govanhill and is similar to the Glasgow average. In the most recent period shown (2020-2024), life expectancy in this area is lower than the Scottish average.

## Population by age group



## Percentage of total population from minority ethnic backgrounds



The overall population of Govanhill increased between 2001 and 2024. This can be attributed to an increase in the population aged under 65. The percentage of the total neighbourhood population from a minority ethnic background increased from 19% in 2001 to 44.1% in 2022 and was above the Glasgow average.

## Notes

1. Data sources: Scottish Index of Multiple Deprivation (SIMD) 2020, Census 2022, 2011, and 2001, National Records of Scotland (NRS).
2. Populations presented in the population trend chart and used to calculate life expectancy estimates are taken from NRS small area population estimates and are based on: the 2001 and 2011 Census for years 2001-2010; and the 2011 and 2022 Census for years 2011-2024.
3. This publication has used small area population estimate data published by the NRS on 24 February 2026. The NRS update their small area population estimates and previous estimates on an annual basis therefore this data is only representative of the data published upon this date. For further information see: <https://www.nrscotland.gov.uk/publications/small-area-population-estimates-mid-2023-and-mid-2024-2011-data-zones/>
4. The Income deprivation and Employment deprivation indicators are derived from SIMD 2020, more information on this deprivation index can be found at: <https://www.gov.scot/collections/scottish-index-of-multiple-deprivation-2020/>.
5. Life expectancies are calculated based on population estimates and death registrations. 95% confidence intervals have been added on the graphs to the neighbourhood data to give an indication of their accuracy. The 95% confidence interval for the Glasgow and/or Scotland comparison line has been removed due to the size of the population. This resulted in the confidence interval sitting on the data line making it unreadable. The x-axes of the life expectancy graphs give the mid-year for each life expectancy estimate e.g. 2020 represents the life expectancy estimate for the period 2018-2022.
6. A notes and definitions document providing further information on the variables presented in the profile can be found in the Profiles section of the Understanding Glasgow website: <https://www.understandingglasgow.com/profiles/neighbourhood-profiles>.