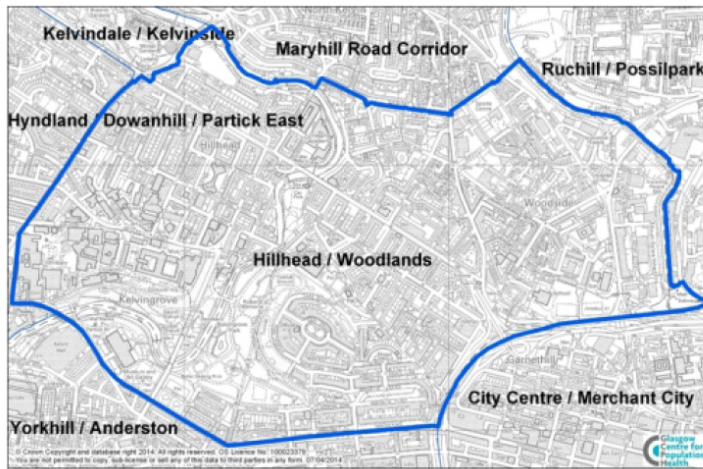


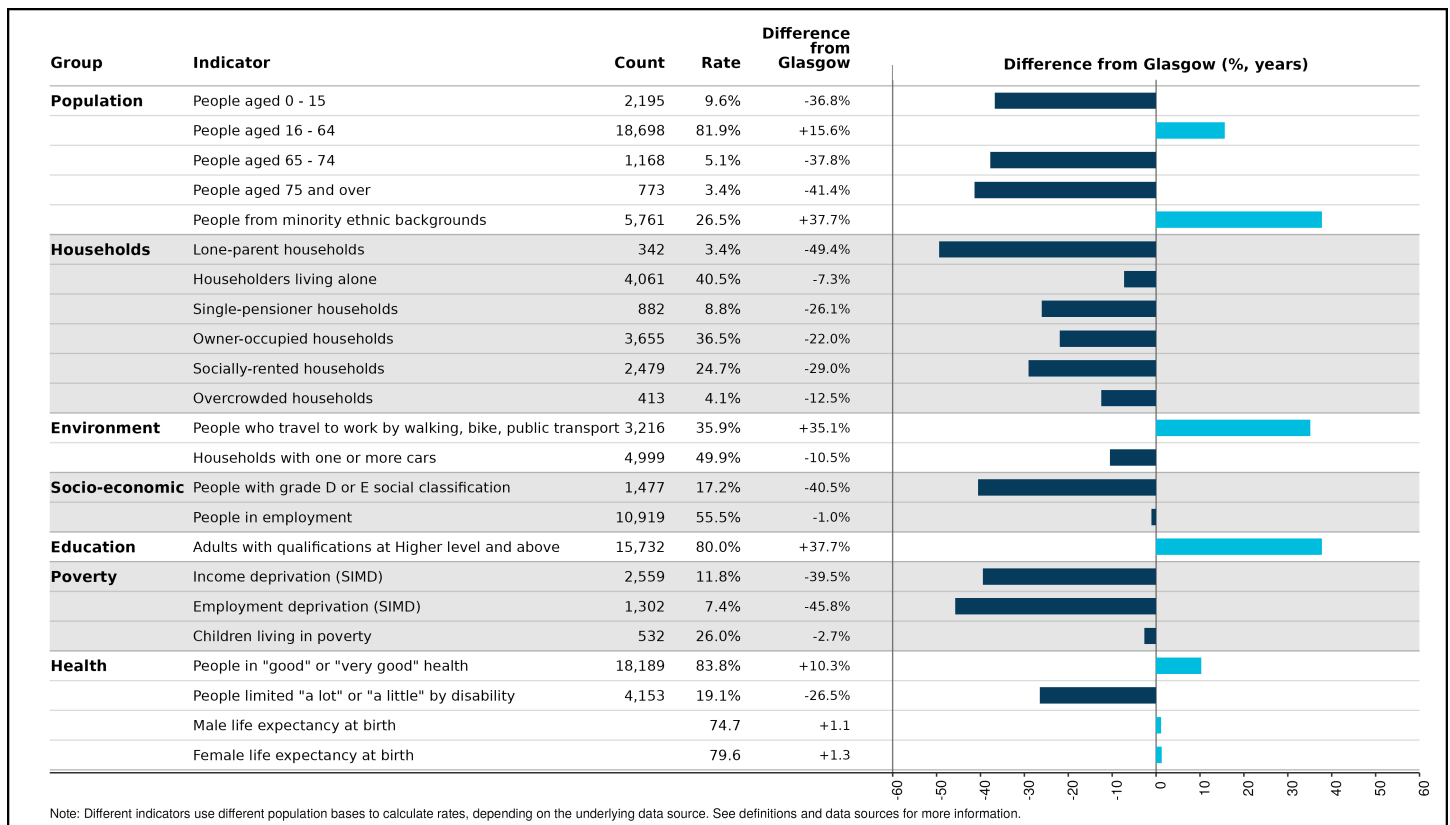
Hillhead and Woodlands

Hillhead and Woodlands is a neighbourhood in the north west of Glasgow with a population of 22,834.



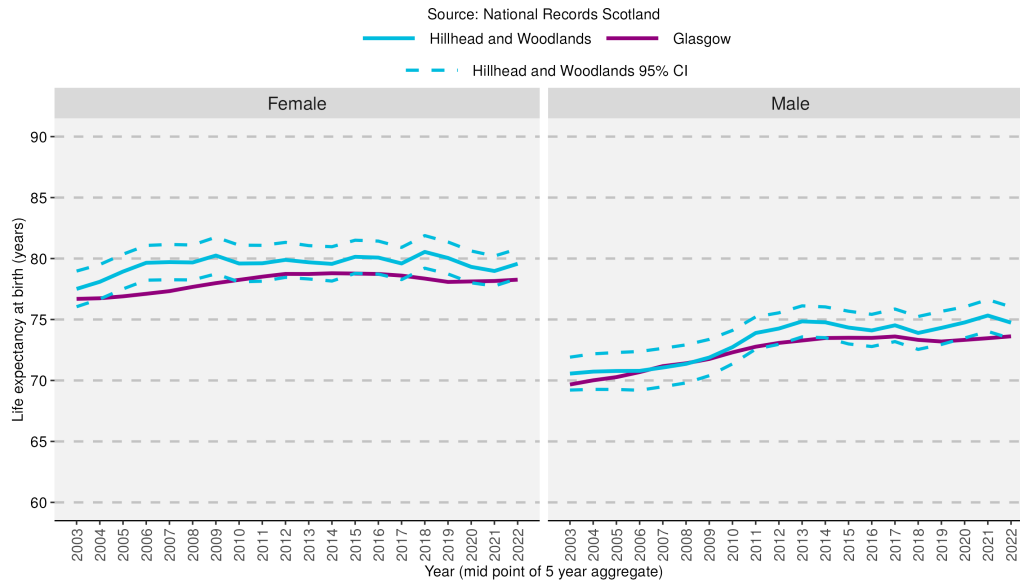
Neighbourhood comparisons with Glasgow

Women in Hillhead and Woodlands live, on average, five years longer than men. The neighbourhood has a particularly large working-age population (aged 16-64). The percentages of income and employment deprivation are particularly low in this area compared with the Glasgow average. More than a quarter of the population are from a minority ethnic background.



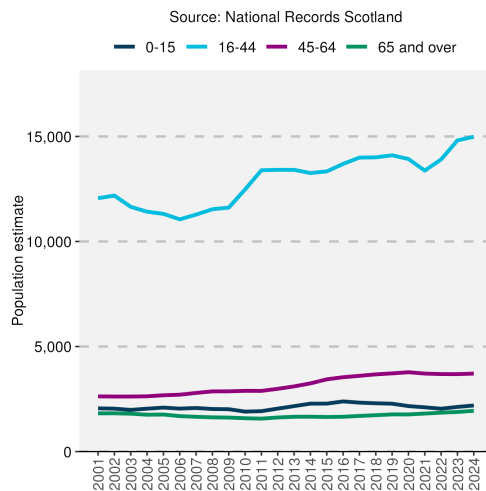
Neighbourhood/Area trends

Life expectancy at birth

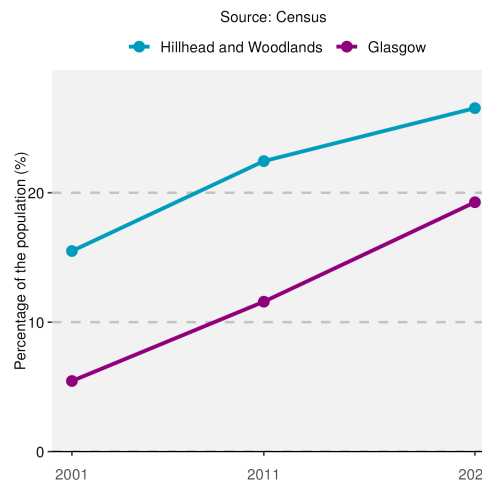


Life expectancy for both males and females has been stable in recent years in Hillhead and Woodlands and is above the Glasgow average. In the most recent period shown (2020-2024), life expectancy in this area is lower than the Scottish average.

Population by age group



Percentage of total population from minority ethnic backgrounds



The overall population of Hillhead and Woodlands increased between 2001 and 2024. This is largely due to an increase in working-age people. The percentage of the total neighbourhood population from a minority ethnic background increased from 15.5% in 2001 to 26.5% in 2022 and was above the Glasgow average.

Notes

1. Data sources: Scottish Index of Multiple Deprivation (SIMD) 2020, Census 2022, 2011, and 2001, National Records of Scotland (NRS).
2. Populations presented in the population trend chart and used to calculate life expectancy estimates are taken from NRS small area population estimates and are based on: the 2001 and 2011 Census for years 2001-2010; and the 2011 and 2022 Census for years 2011-2024.
3. This publication has used small area population estimate data published by the NRS on 24 February 2026. The NRS update their small area population estimates and previous estimates on an annual basis therefore this data is only representative of the data published upon this date. For further information see: <https://www.nrscotland.gov.uk/publications/small-area-population-estimates-mid-2023-and-mid-2024-2011-data-zones/>
4. The Income deprivation and Employment deprivation indicators are derived from SIMD 2020, more information on this deprivation index can be found at: <https://www.gov.scot/collections/scottish-index-of-multiple-deprivation-2020/>.
5. Life expectancies are calculated based on population estimates and death registrations. 95% confidence intervals have been added on the graphs to the neighbourhood data to give an indication of their accuracy. The 95% confidence interval for the Glasgow and/or Scotland comparison line has been removed due to the size of the population. This resulted in the confidence interval sitting on the data line making it unreadable. The x-axes of the life expectancy graphs give the mid-year for each life expectancy estimate e.g. 2020 represents the life expectancy estimate for the period 2018-2022.
6. A notes and definitions document providing further information on the variables presented in the profile can be found in the Profiles section of the Understanding Glasgow website: <https://www.understandingglasgow.com/profiles/neighbourhood-profiles>.