

Langside and Battlefield

Langside and Battlefield is a neighbourhood in the south of Glasgow with a population of 14,274.



Neighbourhood comparisons with Glasgow

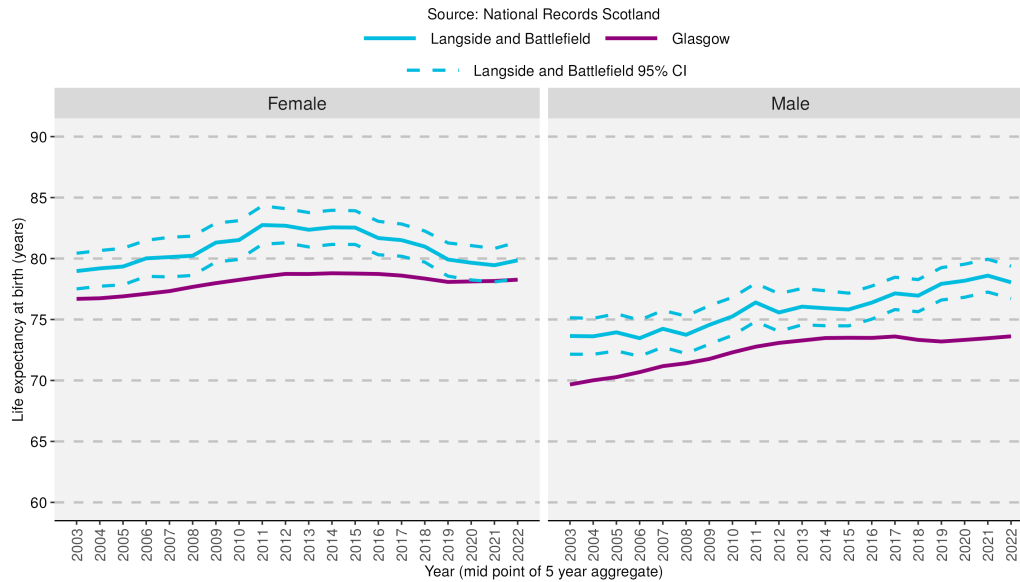
Women in Langside and Battlefield live, on average, two years longer than men. Only 9% of the population in this area are children. Lone-parent households are less common than in Glasgow as a whole, while householders living alone are more common. There are low levels of socially-rented households as well as low levels of income and employment deprivation.

Group	Indicator	Count	Rate	Difference from Glasgow	Difference from Glasgow (% , years)
Population	People aged 0 - 15	1,311	9.2%	-39.6%	-40
	People aged 16 - 64	11,262	78.9%	+11.4%	10
	People aged 65 - 74	1,001	7.0%	-14.7%	-20
	People aged 75 and over	700	4.9%	-15.0%	-20
	People from minority ethnic backgrounds	1,608	11.6%	-39.6%	-40
Households	Lone-parent households	221	2.7%	-59.4%	-60
	Householders living alone	4,199	52.1%	+19.2%	20
	Single-pensioner households	770	9.6%	-19.8%	-20
	Owner-occupied households	4,914	61.0%	+30.5%	30
	Socially-rented households	766	9.5%	-72.7%	-70
	Overcrowded households	228	2.8%	-39.9%	-40
Environment	People who travel to work by walking, bike, public transport	2,514	28.5%	+7.5%	5
	Households with one or more cars	4,996	62.0%	+11.2%	10
Socio-economic	People with grade D or E social classification	838	12.2%	-57.7%	-50
	People in employment	9,152	73.4%	+30.7%	30
Education	Adults with qualifications at Higher level and above	10,014	80.3%	+38.2%	40
Poverty	Income deprivation (SIMD)	1,313	9.5%	-51.5%	-50
	Employment deprivation (SIMD)	722	6.7%	-50.8%	-50
	Children living in poverty	224	16.6%	-37.8%	-40
Health	People in "good" or "very good" health	11,460	82.9%	+9.2%	10
	People limited "a lot" or "a little" by disability	2,779	20.1%	-22.8%	-20
	Male life expectancy at birth		78.0	+4.4	5
	Female life expectancy at birth		79.9	+1.6	2

Note: Different indicators use different population bases to calculate rates, depending on the underlying data source. See definitions and data sources for more information.

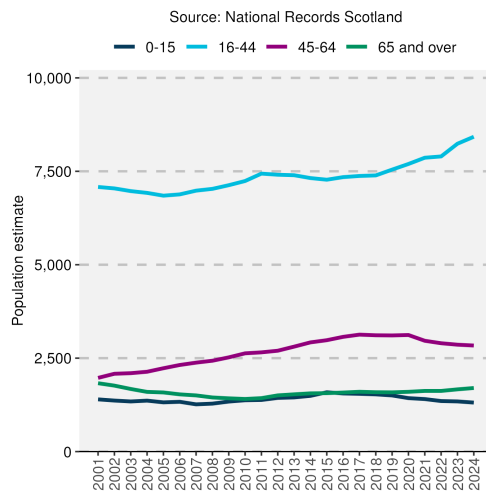
Neighbourhood/Area trends

Life expectancy at birth

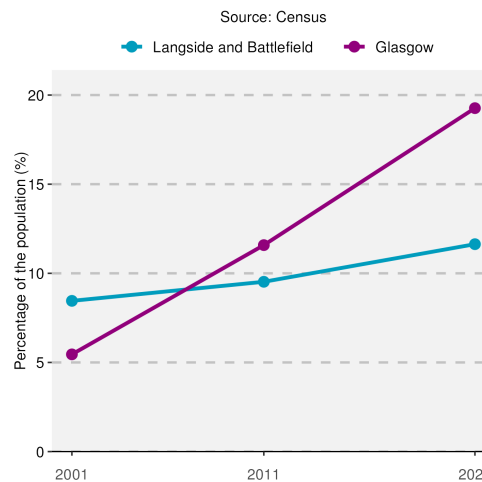


Male life expectancy has risen and female life expectancy has fallen in recent years in Langside and Battlefield. In the most recent period shown (2020-2024), life expectancy in this area is higher for males than the Glasgow and Scottish averages.

Population by age group



Percentage of total population from minority ethnic backgrounds



The overall population of Langside and Battlefield increased between 2001 and 2024. This is largely due to population growth of people aged 16-64. The percentage of the total neighbourhood population from a minority ethnic background increased from 8.5% in 2001 to 11.6% in 2022 and are below the Glasgow average.

Notes

1. Data sources: Scottish Index of Multiple Deprivation (SIMD) 2020, Census 2022, 2011, and 2001, National Records of Scotland (NRS).
2. Populations presented in the population trend chart and used to calculate life expectancy estimates are taken from NRS small area population estimates and are based on: the 2001 and 2011 Census for years 2001-2010; and the 2011 and 2022 Census for years 2011-2024.
3. This publication has used small area population estimate data published by the NRS on 24 February 2026. The NRS update their small area population estimates and previous estimates on an annual basis therefore this data is only representative of the data published upon this date. For further information see: <https://www.nrscotland.gov.uk/publications/small-area-population-estimates-mid-2023-and-mid-2024-2011-data-zones/>
4. The Income deprivation and Employment deprivation indicators are derived from SIMD 2020, more information on this deprivation index can be found at: <https://www.gov.scot/collections/scottish-index-of-multiple-deprivation-2020/>.
5. Life expectancies are calculated based on population estimates and death registrations. 95% confidence intervals have been added on the graphs to the neighbourhood data to give an indication of their accuracy. The 95% confidence interval for the Glasgow and/or Scotland comparison line has been removed due to the size of the population. This resulted in the confidence interval sitting on the data line making it unreadable. The x-axes of the life expectancy graphs give the mid-year for each life expectancy estimate e.g. 2020 represents the life expectancy estimate for the period 2018-2022.
6. A notes and definitions document providing further information on the variables presented in the profile can be found in the Profiles section of the Understanding Glasgow website: <https://www.understandingglasgow.com/profiles/neighbourhood-profiles>.