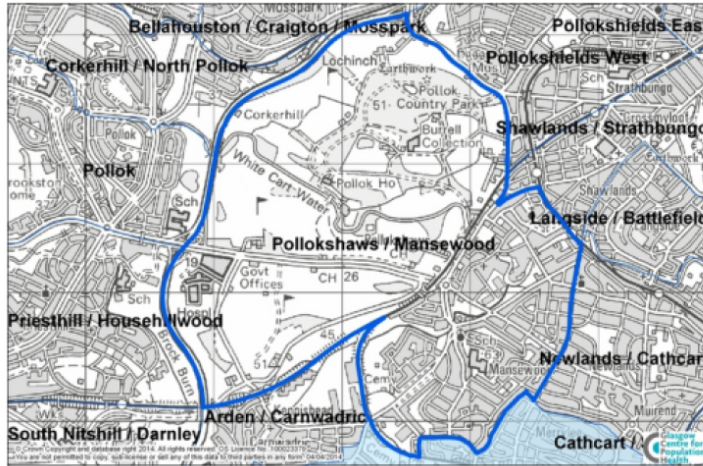


# Pollokshaws and Mansewood

Pollokshaws and Mansewood is a neighbourhood in the south of Glasgow with a population of 11,575.



## Neighbourhood comparisons with Glasgow

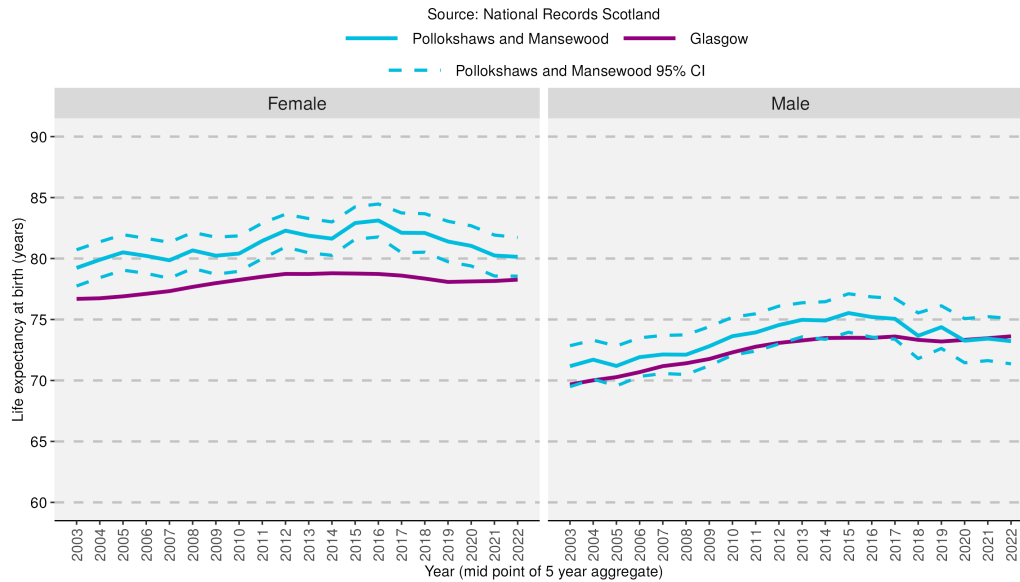
Women in Pollokshaws and Mansewood live, on average, seven years longer than men. The area has a higher proportion of people from a minority ethnic background and a low proportion of overcrowded households compared to the Glasgow average. There is also a higher proportion of single-pensioner households in this area when comparing to the Glasgow average.

Group	Indicator	Count	Rate	Difference from Glasgow	Difference from Glasgow (% , years)
<b>Population</b>	People aged 0 - 15	1,739	15.0%	-1.2%	
	People aged 16 - 64	7,763	67.1%	-5.3%	
	People aged 65 - 74	1,063	9.2%	+11.7%	
	People aged 75 and over	1,010	8.7%	+51.2%	
	People from minority ethnic backgrounds	2,352	21.5%	+11.5%	
<b>Households</b>	Lone-parent households	333	6.1%	-9.0%	
	Householders living alone	2,504	46.1%	+5.6%	
	Single-pensioner households	876	16.1%	+35.6%	
	Owner-occupied households	2,911	53.6%	+14.8%	
	Socially-rented households	1,745	32.2%	-7.8%	
	Overcrowded households	221	4.1%	-13.5%	
<b>Environment</b>	People who travel to work by walking, bike, public transport	1,211	24.9%	-6.1%	
	Households with one or more cars	3,220	59.3%	+6.5%	
<b>Socio-economic</b>	People with grade D or E social classification	1,124	28.7%	-0.5%	
	People in employment	5,100	55.3%	-1.4%	
<b>Education</b>	Adults with qualifications at Higher level and above	5,411	58.7%	+1.1%	
<b>Poverty</b>	Income deprivation (SIMD)	2,185	20.5%	+4.7%	
	Employment deprivation (SIMD)	1,011	14.5%	+6.6%	
	Children living in poverty	466	26.6%	-0.5%	
<b>Health</b>	People in "good" or "very good" health	8,157	74.5%	-1.9%	
	People limited "a lot" or "a little" by disability	3,058	27.9%	+7.3%	
	Male life expectancy at birth		73.2	-0.4	
	Female life expectancy at birth		80.1	+1.9	

Note: Different indicators use different population bases to calculate rates, depending on the underlying data source. See definitions and data sources for more information.

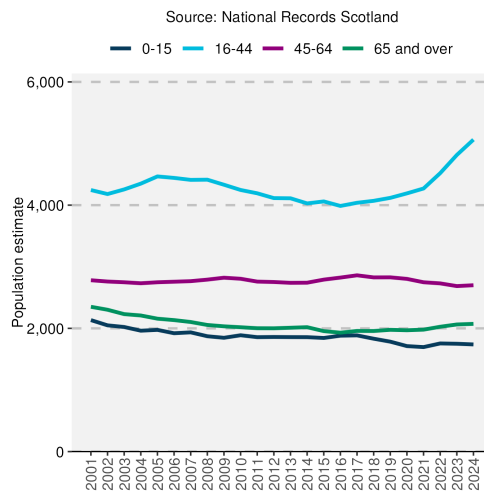
# Neighbourhood/Area trends

## Life expectancy at birth

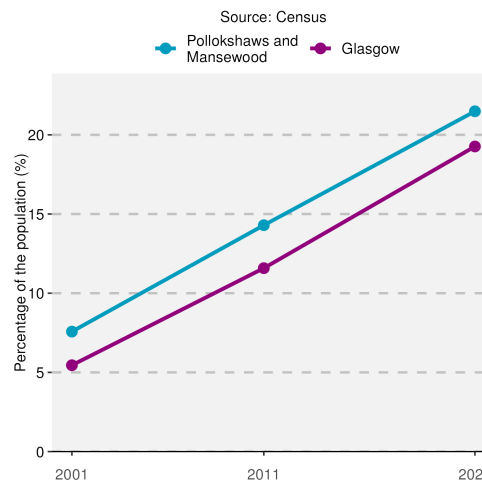


Life expectancy for both males and females has fallen in recent years in Pollokshaws and Mansewood and is above the Glasgow average. In the most recent period shown (2020-2024), life expectancy in this area is higher for females than the Scottish average.

## Population by age group



## Percentage of total population from minority ethnic backgrounds



The overall population of Pollokshaws and Mansewood stayed roughly the same between 2001 and 2024. There was an increase in the population aged 16-44. The percentage of the total neighbourhood population from a minority ethnic background increased from 7.6% in 2001 to 21.5% in 2022 and was above the Glasgow average.

### Notes

1. Data sources: Scottish Index of Multiple Deprivation (SIMD) 2020, Census 2022, 2011, and 2001, National Records of Scotland (NRS).
2. Populations presented in the population trend chart and used to calculate life expectancy estimates are taken from NRS small area population estimates and are based on: the 2001 and 2011 Census for years 2001-2010; and the 2011 and 2022 Census for years 2011-2024.
3. This publication has used small area population estimate data published by the NRS on 24 February 2026. The NRS update their small area population estimates and previous estimates on an annual basis therefore this data is only representative of the data published upon this date. For further information see: <https://www.nrscotland.gov.uk/publications/small-area-population-estimates-mid-2023-and-mid-2024-2011-data-zones/>
4. The Income deprivation and Employment deprivation indicators are derived from SIMD 2020, more information on this deprivation index can be found at: <https://www.gov.scot/collections/scottish-index-of-multiple-deprivation-2020/>.
5. Life expectancies are calculated based on population estimates and death registrations. 95% confidence intervals have been added on the graphs to the neighbourhood data to give an indication of their accuracy. The 95% confidence interval for the Glasgow and/or Scotland comparison line has been removed due to the size of the population. This resulted in the confidence interval sitting on the data line making it unreadable. The x-axes of the life expectancy graphs give the mid-year for each life expectancy estimate e.g. 2020 represents the life expectancy estimate for the period 2018-2022.
6. A notes and definitions document providing further information on the variables presented in the profile can be found in the Profiles section of the Understanding Glasgow website: <https://www.understandingglasgow.com/profiles/neighbourhood-profiles>.