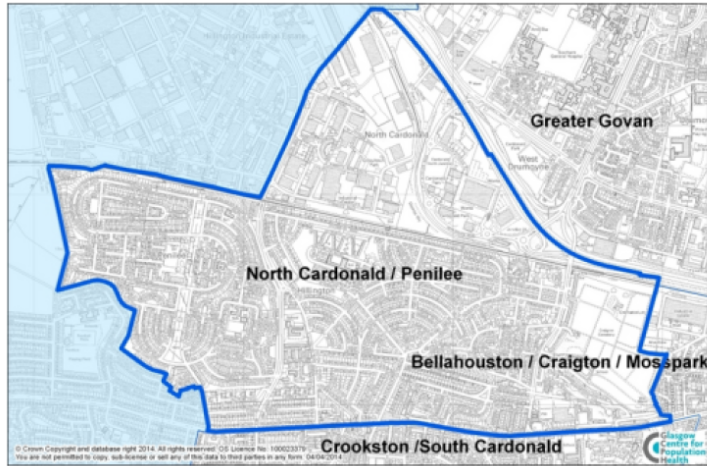


North Cardonald and Penilee

North Cardonald and Penilee is a neighbourhood in the south of Glasgow with a population of 13,432.



Neighbourhood comparisons with Glasgow

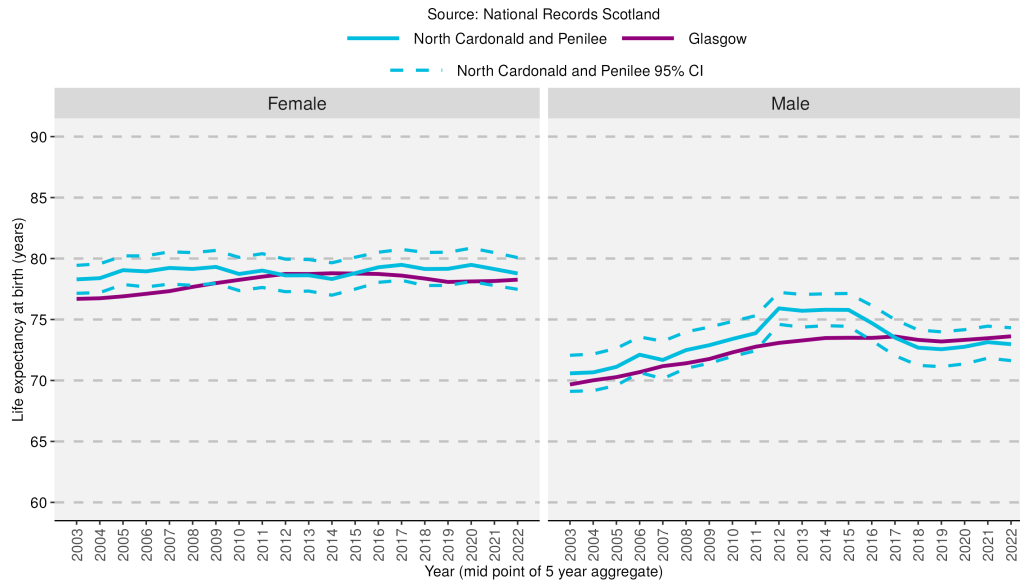
Women in North Cardonald and Penilee live, on average, six years longer than men. This area has a higher proportion of lone-parent and single-pensioner households when compared with the Glasgow average. The area also has just over two-fifths of adults with qualifications at Higher level and above, which is 23% lower than Glasgow.

Group	Indicator	Count	Rate	Difference from Glasgow	Difference from Glasgow (% , years)
Population	People aged 0 - 15	2,509	18.7%	+22.9%	22.9%
	People aged 16 - 64	8,614	64.1%	-9.4%	-9.4%
	People aged 65 - 74	1,359	10.1%	+23.1%	23.1%
	People aged 75 and over	950	7.1%	+22.5%	22.5%
	People from minority ethnic backgrounds	1,889	14.3%	-25.8%	-25.8%
Households	Lone-parent households	526	8.8%	+30.2%	30.2%
	Householders living alone	2,424	40.5%	-7.4%	-7.4%
	Single-pensioner households	910	15.2%	+27.6%	27.6%
	Owner-occupied households	3,316	55.4%	+18.5%	18.5%
	Socially-rented households	1,955	32.6%	-6.4%	-6.4%
	Overcrowded households	257	4.3%	-8.9%	-8.9%
Environment	People who travel to work by walking, bike, public transport	1,232	22.4%	-15.5%	-15.5%
	Households with one or more cars	3,476	58.0%	+4.1%	4.1%
Socio-economic	People with grade D or E social classification	1,519	35.0%	+21.3%	21.3%
	People in employment	5,766	54.1%	-3.7%	-3.7%
Education	Adults with qualifications at Higher level and above	4,797	45.0%	-22.6%	-22.6%
Poverty	Income deprivation (SIMD)	3,103	23.2%	+18.7%	18.7%
	Employment deprivation (SIMD)	1,376	16.1%	+18.7%	18.7%
	Children living in poverty	642	25.1%	-6.1%	-6.1%
Health	People in "good" or "very good" health	9,547	72.3%	-4.8%	-4.8%
	People limited "a lot" or "a little" by disability	3,963	30.0%	+15.3%	15.3%
	Male life expectancy at birth		73.0	-0.6	-0.6
	Female life expectancy at birth		78.8	+0.5	0.5

Note: Different indicators use different population bases to calculate rates, depending on the underlying data source. See definitions and data sources for more information.

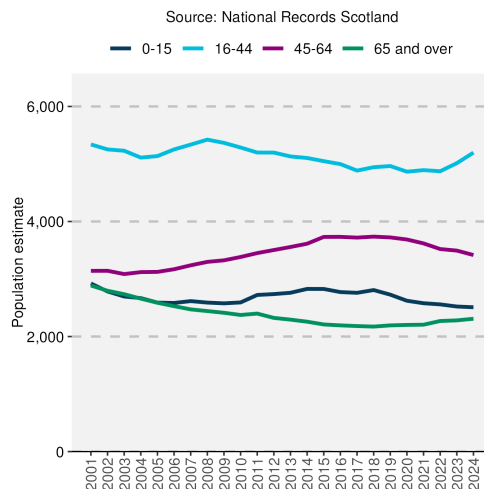
Neighbourhood/Area trends

Life expectancy at birth

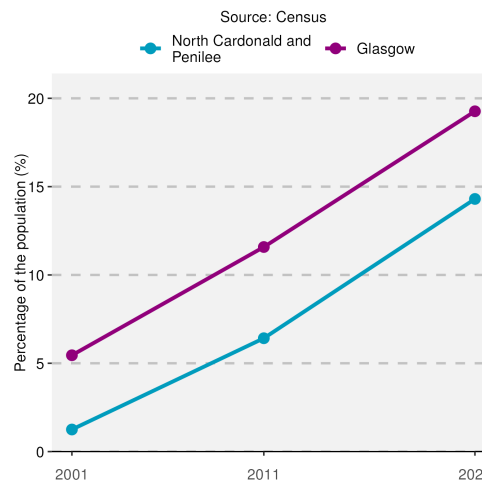


Life expectancy for both males and females has been stable in recent years in North Cardonald and Penilee and is above the Glasgow average for females. In the most recent period shown (2020-2024), life expectancy in this area is lower than the Scottish average.

Population by age group



Percentage of total population from minority ethnic backgrounds



The overall population of North Cardonald and Penilee stayed roughly the same between 2001 and 2024. Variations across age groups largely balanced each other out. The percentage of the total neighbourhood population from a minority ethnic background increased from 1.2% in 2001 to 14.3% in 2022 but remained below the Glasgow average.

Notes

1. Data sources: Scottish Index of Multiple Deprivation (SIMD) 2020, Census 2022, 2011, and 2001, National Records of Scotland (NRS).
2. Populations presented in the population trend chart and used to calculate life expectancy estimates are taken from NRS small area population estimates and are based on: the 2001 and 2011 Census for years 2001-2010; and the 2011 and 2022 Census for years 2011-2024.
3. This publication has used small area population estimate data published by the NRS on 24 February 2026. The NRS update their small area population estimates and previous estimates on an annual basis therefore this data is only representative of the data published upon this date. For further information see: <https://www.nrscotland.gov.uk/publications/small-area-population-estimates-mid-2023-and-mid-2024-2011-data-zones/>
4. The Income deprivation and Employment deprivation indicators are derived from SIMD 2020, more information on this deprivation index can be found at: <https://www.gov.scot/collections/scottish-index-of-multiple-deprivation-2020/>.
5. Life expectancies are calculated based on population estimates and death registrations. 95% confidence intervals have been added on the graphs to the neighbourhood data to give an indication of their accuracy. The 95% confidence interval for the Glasgow and/or Scotland comparison line has been removed due to the size of the population. This resulted in the confidence interval sitting on the data line making it unreadable. The x-axes of the life expectancy graphs give the mid-year for each life expectancy estimate e.g. 2020 represents the life expectancy estimate for the period 2018-2022.
6. A notes and definitions document providing further information on the variables presented in the profile can be found in the Profiles section of the Understanding Glasgow website: <https://www.understandingglasgow.com/profiles/neighbourhood-profiles>.