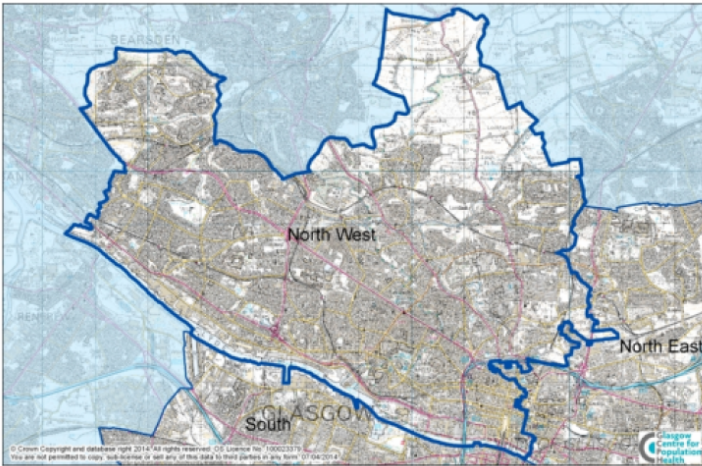


Children and young people's profile - Glasgow North West

Glasgow North West has a population of 76,776 children and young people (aged 0–24 years).



Comparisons with Scotland

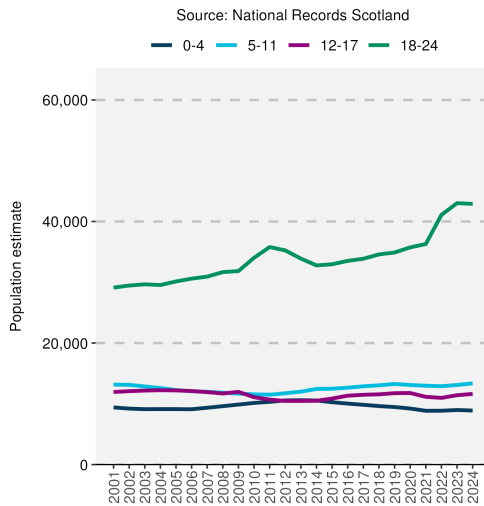
In Glasgow North West, the number of those aged 0–17 years is lower than the Scottish average. There is a high proportion of 18–24-year-olds in Glasgow North West, 116% higher than the Scottish average. Children and young people from minority ethnic backgrounds make up 29% of the population, 150% higher than the Scottish average. Children living in relative poverty, lone-parent households and under-25s living in privately-rented or rent-free households are all higher than the Scottish average, 49%, 31% and 64% higher respectively. Life expectancy in 2022 for both sexes was higher than the Glasgow average but lower than the Scottish average.

Group	Indicator	Time period	Count	Rate	Difference from Scotland	Difference from Scotland (% , years)	
						Bar chart (left)	Bar chart (right)
Demography	Population aged 0–4	2024	8,892	3.8%	-14.5%	-14.5%	
	Population aged 5–11	2024	13,363	5.7%	-21.2%	-21.2%	
	Population aged 12–17	2024	11,624	5.0%	-26.0%	-26.0%	
	Population aged 18–24	2024	42,897	18.3%	+116.2%	+116.2%	
	Live births**	2024	1,737	7.4	-4.7%	-4.7%	
Infant health	Under-25s from minority ethnic backgrounds	2022	21,756	28.9%	+149.9%	+149.9%	
	Infants who sleep in the supine position	2022-24	4,881	98.2%	-0.0%	-0.0%	
	Babies exposed to second-hand smoke	2022-24	273	5.4%	-8.9%	-8.9%	
	Babies born small for gestational age	2022-24	337	6.4%	+26.1%	+26.1%	
	Babies exclusively breast-fed at 6–8 weeks	2024	641	38.2%	+17.8%	+17.8%	
	Babies born before 37 weeks	2022-24	406	7.7%	-10.5%	-10.5%	
	Primary carer smoking at health visitor's first visit	2022-24	527	10.4%	-10.0%	-10.0%	
Crime & safety	Emergency hospital admissions due to assault**	2020-24	124	0.3	+22.1%	+22.1%	
	Emergency hospital admissions due to unintentional injuries**	2020-24	1,159	3.2	-21.2%	-21.2%	
Learning	Children with communication delay at 27–30 months	2022-24	762	16.4%	-6.3%	-6.3%	
	16–19-year-olds not in employment, education or training	2020	606	4.6%	+17.7%	+17.7%	
Socio-economic	Children living in relative poverty	2023	7,001	24.3%	+48.6%	+48.6%	
	Lone-parent households	2022	16,783	24.4%	+31.4%	+31.4%	
	Under-25s living in privately-rented or rent-free households	2022	22,086	29.4%	+64.3%	+64.3%	
Health	Under-25s whose day-to-day activities are limited by disability	2022	8,459	11.2%	+7.5%	+7.5%	
	Hospital admissions for dental treatment**	2020-24	824	5.3	-11.3%	-11.3%	
	Hospitalisations under an alcohol-related diagnosis**	2020-24	406	1.1	+21.2%	+21.2%	
	Hospital admissions under a mental health diagnosis**	2020-24	946	3.4	-39.4%	-39.4%	
	Primary 1 children living with obesity or severe obesity	2022-24	349	7.5%	-15.4%	-15.4%	
	Male life expectancy at birth	2022		73.8	-3.1	-3.1	
	Female life expectancy at birth	2022		78.9	-2.0	-2.0	

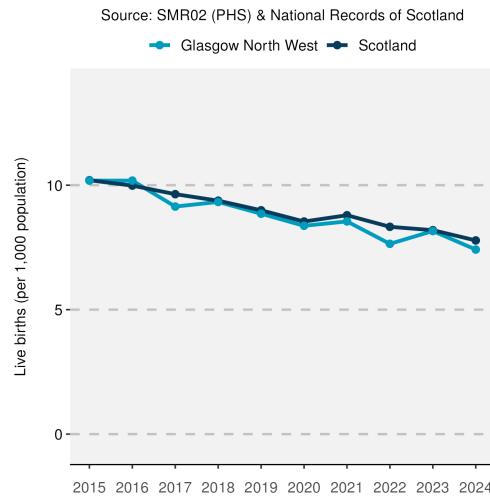
Note: Different indicators use different population bases to calculate rates, depending on the underlying data source. See definitions and data sources for more information.
 All count figures of equal to or less than 5 (denoted as *) have been suppressed to avoid any potential identification.
 All indicators (denoted as **) are measured as the rate per 1,000 of the whole population or of a particular age group rather than as a percentage of the population. See definitions for more information.

Area trends

Population by age group

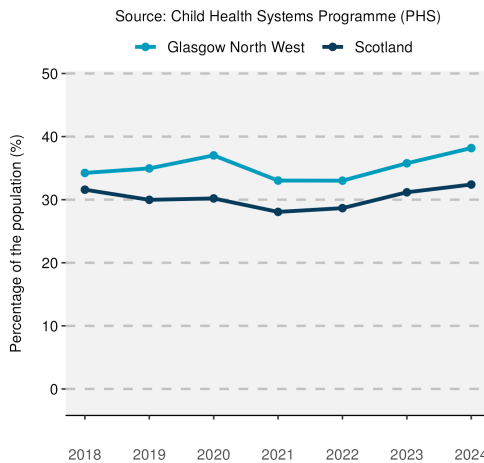


Live births (per 1,000 population)



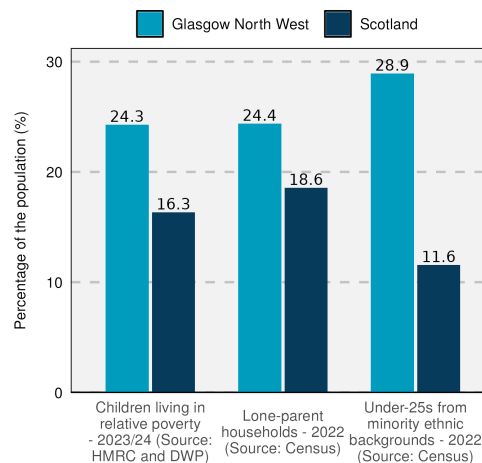
The overall population of Glasgow North West has risen by 21% since 2001. This increase can be attributed to those aged 18–24 years which showed a large rise of 47%. The number of live births in Glasgow North West has decreased since 2015 but has generally remained just below the Scottish average.

Percentage of babies exclusively breast-fed*



*Measured at the 6–8 week health visitor review

Selected indicators compared to Scotland



In Glasgow North West, 38% of babies reviewed in 2024 were exclusively breast-fed at 6-8 weeks. This has increased since 2018 and remains above Scottish average. The percentage of children living in relative poverty, lone-parent households and under-25s from minority ethnic backgrounds are all above the Scottish average.

Notes

1. Data sources: Scottish Index of Multiple Deprivation (SIMD) 2020; Census (2001, 2011 and 2022); National Records of Scotland (NRS); Scottish Morbidity Records (SMR01 and SMR02); Child Health Systems Programme (CHSP) and CHSP Schools; Department for Work and Pensions (DWP); HM Revenue and Customs (HMRC).
2. All count figures of less than 5 (denoted as “**”) have been suppressed to avoid any potential identification.
3. This publication has used small area population estimate data published by the NRS on 24 February 2026. This is presented in the population trend chart and used to calculate life expectancy estimates. The NRS update their small area population estimates and previous estimates on an annual basis therefore this data is only representative of the data published upon this date. For further information see: <https://www.nrscotland.gov.uk/publications/small-area-population-estimates-mid-2023-and-mid-2024-2011-data-zones/>
4. Life expectancies are calculated based on population estimates and death registrations. 95% confidence intervals have been added on the graphs to the neighbourhood data to give an indication of their accuracy. The 95% confidence interval for the Glasgow and/or Scotland comparison line has been removed due to the size of the population. This resulted in the confidence interval sitting on the data line making it unreadable. The x-axes of the life expectancy graphs give the mid-year for each life expectancy estimate e.g. 2020 represents the life expectancy estimate for the period 2018-2022.
5. A notes and definitions document providing further information on the variables presented in the profile can be found in the Profiles section of the Understanding Glasgow website: <https://www.understandingglasgow.com/profiles/children-young-people-s-profiles>.